

**DEPARTMENT OF THE ARMY TECHNICAL MANUAL**

**DIRECT SUPPORT AND GENERAL SUPPORT MAINTENANCE  
REPAIR PARTS AND SPECIAL TOOLS LISTS (INCLUDING  
DEPOT MAINTENANCE REPAIR PARTS AND SPECIAL TOOLS)  
PANELS, FUSE SB-1523/FT (FSN 5920-801-8014)  
AND SB-1524/FT (FSN 5920-801-8013)**

**Headquarters, Department of the Army, Washington, DC  
15 November 1974**

*Current as of 24 September 1974*

	Paragraph	Page
SECTION I INTRODUCTION		
Scope .....	1-1	2
General .....	1-2	2
<b>Explanation of columns</b> .....	<b>1-3</b>	<b>2</b>
Special information .....	<b>1-1</b>	<b>4</b>
Location of repair parts .....	1-5	4
Abbreviations (Not applicable) .....	<b>1-6</b>	<b>5</b>
Reporting of equipment publication improvement .....	1-7	5
II. REPAIR PARTS LIST .....		6
III. SPECIAL TOOLS TEST AND SUPPORT EQUIPMENT (Not Applicable)		
IV. INDEX - FEDERAL STOCK NUMBER AND REFERENCES NUMBER CROSS REFERENCE TO FIGURE AND ITEM NUMBER .....		27

\*This manual, together with TM 11-5925-202-20P, 15 November 1974, supersedes TM 11-5920-202-25P, 17 February 1965.

SECTION I  
INTRODUCTION

**1-1. Scope**

This manual lists repair parts and special tools required for the performance of direct support, general support, and depot maintenance of the SB-1523/FT and SB-1524/FT. The PCCN for the SB-1523/FT is GCWAOE and GCWACF for the SB-1524/FT.

1-2 General

This repair parts and special tools list is divided into the following sections:

a. *Repair Parts List - Section II.* A list of repair parts authorized for the performance of maintenance at the direct support, general support, and depot level. This repair parts list is arranged in alphabetical order.

b. *Special Tools, Test and Support Equipment-Section III.* Not applicable

c. *Index - Federal Stock Number and Reference Number Cross-Reference to Figure and Item Number - Section IV.* A list, in ascending numerical sequence, of all Federal stock numbers appearing in the listings, followed by a list, in alphabetic sequence, of all reference numbers appearing in the listings. Federal stock number and reference numbers are cross-referenced to each illustration figure and item number or reference designation appearance.

1-3 Explanation of Columns

The following provides an explanation of columns found in the tabular list.

a. *Source, Maintenance, and Recoverability Codes (SMR).*

(1) *Source code.* Indicates the manner of acquiring support items for maintenance, repair, or overhaul of end items. Source codes are:

<i>Code</i>	<i>Explanation</i>
PA —	Item procured and stocked for anticipated or known usage.
PB —	Item procured and stocked for insurance purposes because essentiality dictates that a minimum quantity be available in the supply systems.
PC —	Item procured and stocked and which otherwise would be coded PA except that it is deteriorative in nature.

<i>Code</i>	<i>Explanation</i>
PD —	Support item, excluding support equipment, procured for initial issue or outfitting and stocked only for subsequent or additional initial issues or outfittings. Not subject to automatic replenishment.
PE —	Support equipment procured and stocked for initial issue or outfitting to specified maintenance repair activities.
PF —	Support equipment which will not be stocked but which will be centrally procured on demand.
PG —	Item procured and stocked to provide for sustained support for the life of the equipment. It is applied to an item peculiar to the equipment which because of probable discontinuance or shutdown of production facilities would prove uneconomical to reproduce at a later time.
KD —	An item of depot overhaul/repair kit and not purchased separately. Depot kit defined as a kit that provides items required at the time of overhaul or repair.
KF —	An item of a maintenance kit and not purchased separately. Maintenance kit defined as a kit that provides an item that can be replaced at organizational or direct support or general support levels of maintenance.
KB —	Item included in both a depot overhaul/repair kit and a maintenance kit.
MO —	Item to be manufactured or fabricated at organizational level.
MF —	Item to be manufactured or fabricated at direct support maintenance level.
MH —	Item to be manufactured or fabricated at general support maintenance level.
MD —	Item to be manufactured or fabricated at depot maintenance level.
AO —	Item to be assembled at organizational level.
AF —	Item to be assembled at direct support maintenance level.
AH —	Item to be assembled at general support maintenance level.
AD —	Item to be assembled at depot maintenance level.
XA —	Item is not procured or stocked because the requirements for the item will result in the replacement of the next higher assembly.

<i>Code</i>	<i>Explanation</i>
<b>XB</b> —	Item is not procured or stocked. If not available through salvage, requisition.
<b>XC</b> —	Installation drawing, diagram instruction sheet, field service drawing, that is identified by manufacturers' part number.
<b>XD</b> —	Support items can be requisitioned with justification.

**NOTE**

Cannibalization or salvage may be used as a source of supply for any items source coded above except those coded XA and aircraft support items as restricted by AR 700-42.

*(2) Maintenance code.* Maintenance codes are assigned to indicate the levels of maintenance authorized to USE and REPAIR support items. The maintenance codes are entered in the third and fourth positions of the Uniform SMR Code Format as follows:

*(a) Use (third position).* The maintenance code entered in the third position indicates the lowest maintenance level authorized to remove, replace, and use the support item. The maintenance code entered in the third position indicates one of the following levels of maintenance.

<i>Code</i>	<i>Application/Explanation</i>
<b>O</b> —	Support item is removed, replaced, used at the organizational level of maintenance.
<b>NOTE</b>	
	A code "C" may be used in this position to denote crew or operator maintenance performed within organizational maintenance.
<b>F</b> —	Support item is removed, replaced, used at the direct support maintenance level.
<b>H</b> —	Support item is removed, replaced, used at the general support maintenance.
<b>D</b> —	Support items that are removed, replaced, used at depot only.

*(b) Repair (fourth position).* The maintenance code entered in the fourth position indicates whether the item is to be repaired and identifies the lowest maintenance level with the capability to perform complete repair (i.e., all authorized maintenance functions). When a maintenance code is not used a dash (-) sign is entered. For multiservice equipment/systems or when a code is entered, this position will contain one of the following maintenance codes as assigned by the service(s) that require the code:

<i>Code</i>	<i>Application/Explanation</i>
<b>O</b> —	The lowest maintenance level capable of complete repair of the support item is the organizational level.
<b>F</b> —	The lowest maintenance level capable of complete repair of the support item is direct support.
<b>H</b> —	The lowest maintenance level capable of complete repair of the support item is general support.
<b>D</b> —	The lowest maintenance level capable of complete repair of the support item is the depot level.
<b>L</b> —	Repair restricted to designated Specialized Repair Activity.
<b>Z</b> —	Non-repairable. No repair is authorized.
<b>B</b> —	No repair is authorized. The item may be reconditioned by adjusting, lubricating, etc., at the user level. No parts or special tools are procured for the maintenance of this item.

*(3) Recoverability code.* Recoverability codes are assigned to support items to indicate the disposition action on unserviceable items. The recoverability code is entered in the fifth position of the uniform SMR Code Format as follows:

<i>Code</i>	<i>Explanation</i>
<b>Z</b> —	Nonrepairable item. When unserviceable, condemn and dispose at the level indicated in the first digit of the maintenance code.
<b>O</b> —	Repairable item. When uneconomically repairable, condemn and dispose at organizational level.
<b>F</b> —	Repairable item. When uneconomically repairable, condemn and dispose at the direct support level.
<b>H</b> —	Repairable item. When uneconomically repairable, condemn and dispose at the general support level.
<b>D</b> —	Repairable item. When beyond lower level repair capability, return to depot. Condemnation and disposal not authorized below depot level.
<b>L</b> —	Repairable item. Repair, condemnation, and disposal not authorized below depot/Specialized Repair Activity level.
<b>A</b> —	Item requires special handling or condemnation procedures because of specific reasons (i.e., precious metal content, high dollar value, critical material or hazardous material).

b. *Federal Stock Number.* Indicates the Federal stock number assigned to the item.

**NOTE**

For requisitioning purposes, the Federal stock number must be converted to the National stock number by adding ".00" after the Federal stock classification (FSC) code (first four digits). For example, FSN 6625-553-0142 converts to NSN 6625-00-553-0142.

c. *Description.* Indicates the Federal item name and a minimum description required to identify the item. The last line indicates the reference number followed by the applicable Federal Supply Code for Manufacturer (FSCM) in parentheses. The FSCM is used as an element in item identification to designate manufacturer or distributor or Government agency, etc., and is identified in SB 708-42.

d. *Unit of Measure (U/M).* Indicates the standard or basic quantity by which the listed item is used in performing the actual maintenance function. This measure is expressed by a two-character alphabetical abbreviation; e.g., ea, in, pr, etc., and is the basis used to indicate quantities and allowances in subsequent columns. When the unit of measure differs from the unit of issue, the lowest unit of issue that will satisfy the required units of measure will be requisitioned.

e. *Quantity Incorporated in Unit.* This column indicates the quantity of the item used in the equipment. Subsequent appearances of the same item in the same assembly are indicated by the letters "REF".

f. *30-Day DS/GS Maintenance Allowances.*

**NOTE**

Allowances in GS column are for GS maintenance only.

(1) The repair parts indicated by asterisk entries in separate allowance columns for DS and GS represent those authorized for use at that category of maintenance to be requisitioned on an "as required" basis, until stockage is based on demand in accordance with AR 710-2.

(2) Allowance quantities are indicated in the special tool lists section for special tools, TMDE, and other support equipment.

g. *1-Year Allowances Per 100 Equipments/Contingency Planning Purposes.* Column intentionally left blank.

h. *Depot Maintenance Allowance Per 100 Equipments.* This column indicates opposite the first appearance of each item the total quantity authorized for depot maintenance of 100 equipments.

i. *Illustration.* This column is divided as follows:

(1) *Figure number.* Indicates the figure number

of the illustration on which the item is shown in TM 11-5920-202-15.

(2) *Item number.* Indicates the item number or reference designation used to reference the item in the illustration.

1-4 Special Information

a. Usable on codes are included in column 3. Uncoded items are applicable to all models. Identification of the usable on codes used in this publication are:

<i>Code</i>	<i>Used on</i>
BYL .....	SB-1523/FT
BYM .....	SB-1524/FT

b. The following publications pertain to the equipment and its components:

TM 11-5920-202-15	Operator, Organizational, Field and Depot Maintenance Manual: Panels, Fuse SB-1523/FT and SB-1524/FT.
TM 11-5920-202-20P	Organizational Maintenance Repair Parts and Special Tools Lists: Panels, Fuse SB-1523/FT (FSN 5920-801-8014) and

1-5 Location of Repair Parts

a. This manual contains one cross-reference index (sec IV) to be used to locate a repair part when either the Federal stock number or reference number (manufacturer's part number) is known. The first column in the index is prepared in numerical or alphanumeric sequence in ascending order. The reference numbers (manufacturer's part numbers) are listed immediately following the last listed Federal stock number in the index of Federal stock numbers.

b. When the Federal stock number or reference number is known, follow the procedures given in (1) and (2) below.

(1) Refer to the index of Federal stock numbers (sec IV) and locate the Federal stock number or reference number. The FSN and reference number are cross-referenced to the applicable figure and item number or reference designation.

(2) Refer to the repair parts list (sec II) and locate the figure number (col 10a) and item number or reference designation (col 10b) as noted in the FSN index.

c. When the figure and item number or reference designation are known, scrutinize columns 10a and 10b of the repair parts list (sec II) until the item is

located.

*d.* When the FSN, reference number, figure number, item number and reference designation are not known, scrutinize column 3 of the repair parts list (see II), which is arranged in alphabetical order.

1-6 Abbreviations

Not applicable.

1-7 Reporting of Equipment Publication  
Improvements

The reporting of errors, omissions, and recommendations for improving this publication by the individual user is encouraged. Reports should be submitted on DA Form 2028 (Recommended Changes to Publications and Blank Forms) and forwarded direct to Commander, US Army Electronics Command, ATTN: AMSEL-MA-CW, Fort Monmouth, NJ 07703.

SECTION II

TM 11-5920-202-34P

(1) SMR CODE	(2) FEDERAL STOCK NUMBER	(3) DESCRIPTION REFERENCE NUMBER & MFR. CODE    USABLE ON CODE		(4) UNIT Q MEAS	(5) QTY INC IN UNIT	(6) 30-DAY DS MAINT ALLOWANCE			(7) 30-DAY GS MAINT ALLOWANCE			(8) 1-YR ALW PER 100 EQUIP CNTGCT	(9) DEPOT MAINT ALW PER 100 EQUIP	(10) ILLUSTRATION	
						(a)	(b)	(c)	(a)	(b)	(c)			(a)	(b)
						1-20	21-50	51-100	1-20	21-50	51-100			FIGURE NO.	ITEM NO.
PACZZ	5920-280-8582	FUSE, INDICATING ALARM F1 COPPER..... ELEMENT NO INSUL SLEEVE 1 TIME IND 1- 1/3 AMP 90 V OR LESS COLOR CODE WHITE 358 (71400) BYL	EA	24	*	*	*	*	*	*		5	7-2	F1	
PACZZ	5920-280-8582	FUSE, INDICATING ALARM F2 COPPER..... ELEMENT NO INSUL SLEEVE 1 TIME IND 1- 1/3 AMP 90 V OR LESS COLOR CODE WHITE 358 (71400) BYL	EA	REF	*	*	*	*	*	*		5	7-2	F2	
PACZZ	5920-280-8582	FUSE, INDICATING ALARM F3 COPPER..... ELEMENT NO INSUL SLEEVE 1 TIME IND 1- 1/3 AMP 90 V OR LESS COLOR CODE WHITE 358 (71400) BYL	EA	REF	*	*	*	*	*	*		5	7-2	F3	
PACZZ	5720-280-8582	FUSE, INDICATING ALARM F4 COPPER..... ELEMENT NO INSUL SLEEVE 1 TIME IND 1- 1/3 AMP 90 V OR LESS COLOR CODE WHITE 358 (71400) BYL	EA	REF	*	*	*	*	*	*		5	7-2	F4	
PACZZ	5920-280-8582	FUSE, INDICATING ALARM F5 COPPER..... ELEMENT NO INSUL SLEEVE 1 TIME IND 1- 1/3 AMP 90 V OR LESS COLOR CODE WHITE 358 (71400) BYL	EA	REF	*	*	*	*	*	*		5	7-2	F5	
PACZZ	5920-280-8582	FUSE, INDICATING ALARM F6 COPPER..... ELEMENT NO INSUL SLEEVE 1 TIME IND 1- 1/3 AMP 90 V OR LESS COLOR CODE WHITE 358 (71400) BYL	EA	REF	*	*	*	*	*	*		5	7-2	F6	
PACZZ	5920-280-8582	FUSE, INDICATING ALARM F7 COPPER..... ELEMENT NO INSUL SLEEVE 1 TIME IND 1- 1/3 AMP 90 V OR LESS COLOR CODE WHITE 358 (71400) BYL	EA	REF	*	*	*	*	*	*		5	7-2	F7	
PACZZ	5920-280-8582	FUSE, INDICATING ALARM F8 COPPER..... ELEMENT NO INSUL SLEEVE 1 TIME IND 1- 1/3 AMP 90 V OR LESS COLOR CODE WHITE 358 (71400) BYL	EA	REF	*	*	*	*	*	*		5	7-2	F8	
PACZZ	5920-280-8582	FUSE, INDICATING ALARM F9 COPPER..... ELEMENT NO INSUL SLEEVE 1 TIME IND 1- 1/3 AMP 90 V OR LESS COLOR CODE WHITE 358 (71400) BYL	EA	REF	*	*	*	*	*	*		5	7-2	F9	
PACZZ	5920-280-8582	FUSE, INDICATING ALARM F10 COPPER..... ELEMENT NO INSUL SLEEVE 1 TIME IND 1- 1/3 AMP 90 V OR LESS COLOR CODE WHITE 358 (71400) BYL	EA	REF	*	*	*	*	*	*		5	7-2	F10	
PACZZ	5920-280-8582	FUSE, INDICATING ALARM F11 COPPER..... ELEMENT NO INSUL SLEEVE 1 TIME IND 1- 1/3 AMP 90 V OR LESS COLOR CODE WHITE 358 (71400) BYL	EA	REF	*	*	*	*	*	*		5	7-2	F11	
PACZZ	5920-280-8582	FUSE, INDICATING ALARM F12 COPPER..... ELEMENT NO INSUL SLEEVE 1 TIME IND 1- 1/3 AMP 90 V OR LESS COLOR CODE WHITE 358 (71400) BYL	EA	REF	*	*	*	*	*	*		5	7-2	F12	
PACZZ	5920-280-8582	FUSE, INDICATING ALARM F13 COPPER..... ELEMENT NO INSUL SLEEVE 1 TIME IND 1- 1/3 AMP 90 V OR LESS COLOR CODE WHITE 358 (71400) BYL	EA	REF	*	*	*	*	*	*		5	7-2	F13	

(1) SMR CODE	FEDERAL STOCK NUMBER	(3) DESCRIPTION REFERENCE NUMBER & MFR. CODE    USABLE ON CODE		(4) UNIT OF MEAS	(5) QTY INC IN UNIT	(6) 30-DAY DS MAINT ALLOWANCE			(7) 30-DAY GS MAINT ALLOWANCE			(8) 1-YR ALW PER 100 EQUIP CNT/GCY	(9) DEPOT MAINT ALW PER 100 EQUIP	(10) ILLUSTRATION	
						(a)	(b)	(c)	(a)	(b)	(c)			(a)	(b)
						1-20	21-50	51-100	1-20	21-50	51-100			FIGURE NO.	ITEM NO.
PACZZ	5920-280-8582	FUSE, INDICATING ALARM F14 COPPER..... ELEMENT NO INSUL SLEEVE 1 TIME IND 1- 1/3 AMP 90 V OR LESS COLOR CODE WHITE 35B (71400) BYL	EA	REF	*	*	*	*	*	*		5	7-2	F14	
PACZZ	5920-280-8582	FUSE, INDICATING ALARM F15 COPPER..... ELEMENT NO INSUL SLEEVE 1 TIME IND 1- 1/3 AMP 90 V OR LESS COLOR CODE WHITE 35B (71400) BYL	EA	REF	*	*	*	*	*	*		5	7-2	F15	
PACZZ	5920-280-8582	FUSE, INDICATING ALARM F16 COPPER..... ELEMENT NO INSUL SLEEVE 1 TIME IND 1- 1/3 AMP 90 V OR LESS COLOR CODE WHITE 35B (71400) BYL	EA	REF	*	*	*	*	*	*		5	7-2	F16	
PACZZ	5920-280-8582	FUSE, INDICATING ALARM F17 COPPER..... ELEMENT NO INSUL SLEEVE 1 TIME IND 1- 1/3 AMP 90 V OR LESS COLOR CODE WHITE 35B (71400) BYL	EA	REF	*	*	*	*	*	*		5	7-2	F17	
PACZZ	5920-280-8582	FUSE, INDICATING ALARM F18 COPPER..... ELEMENT NO INSUL SLEEVE 1 TIME IND 1- 1/3 AMP 90 V OR LESS COLOR CODE WHITE 35B (71400) BYL	EA	REF	*	*	*	*	*	*		5	7-2	F18	
PACZZ	5920-280-8582	FUSE, INDICATING ALARM F19 COPPER..... ELEMENT NO INSUL SLEEVE 1 TIME IND 1- 1/3 AMP 90 V OR LESS COLOR CODE WHITE 35B (71400) BYL	EA	REF	*	*	*	*	*	*		5	7-2	F19	
PACZZ	5920-280-8582	FUSE, INDICATING ALARM F20 COPPER..... ELEMENT NO INSUL SLEEVE 1 TIME IND 1- 1/3 AMP 90 V OR LESS COLOR CODE WHITE 35B (71400) BYL	EA	REF	*	*	*	*	*	*		5	7-2	F20	
PACZZ	5920-280-8582	FUSE, INDICATING ALARM F21 COPPER..... ELEMENT NO INSUL SLEEVE 1 TIME IND 1- 1/3 AMP 90 V OR LESS COLOR CODE WHITE 35B (71400) BYL	EA	REF	*	*	*	*	*	*		5	7-2	F21	
PACZZ	5920-280-8582	FUSE, INDICATING ALARM F22 COPPER..... ELEMENT NO INSUL SLEEVE 1 TIME IND 1- 1/3 AMP 90 V OR LESS COLOR CODE WHITE 35B (71400) BYL	EA	REF	*	*	*	*	*	*		5	7-2	F22	
PACZZ	5920-280-8582	FUSE, INDICATING ALARM F23 COPPER..... ELEMENT NO INSUL SLEEVE 1 TIME IND 1- 1/3 AMP 90 V OR LESS COLOR CODE WHITE 35B (71400) BYL	EA	REF	*	*	*	*	*	*		5	7-2	F23	
PACZZ	5920-280-8582	FUSE, INDICATING ALARM F24 COPPER..... ELEMENT NO INSUL SLEEVE 1 TIME IND 1- 1/3 AMP 90 V OR LESS COLOR CODE WHITE 35B (71400) BYL	EA	REF	*	*	*	*	*	*		5	7-2	F24	
XDCZZ		FUSE INDICATING ALARM F1 COPPER ELEMENT, NO INSUL SLEEVE 1 TIME IND 3 AMP 90 V OR LESS COLOR CODE BLUE ALTERNATE ITEM FOR F1 THRU F24 35G (71400) BYL	EA	24	*	*	*	*	*	*			7-2	F1	
XDCZZ		FUSE INDICATING ALARM F2 COPPER ELEMENT, NO INSUL SLEEVE 1 TIME IND 3 AMP 90 V OR LESS COLOR CODE BLUE ALTERNATE ITEM CONTINUED	EA	REF	*	*	*	*	*	*			7-2	F2	

SECTION II

TM II-5920-202-34P

(1) SMR CODE	(2) FEDERAL STOCK NUMBER	(3) DESCRIPTION REFERENCE NUMBER & MFR. CODE USABLE ON CODE	(4) UNIT OF MEAS	(5) QTY INC IN UNIT	(6) 30-DAY DS MAINT ALLOWANCE			(7) 30-DAY GS MAINT ALLOWANCE			(8) 1-YR ALW PER 100 EQUIP CNTGCY	(9) DEPOT MAINT ALW PER 100 EQUIP	(10) ILLUSTRATION	
					(a)	(b)	(c)	(a)	(b)	(c)			(a)	(b)
					1-20	21-50	51-100	1-20	21-50	51-100			FIGURE NO.	ITEM NO.
		CONTINUED												
XDCZZ		FOR F1 THRU F24 356 (71400) BYL FUSE INDICATING ALARM F3 COPPER ELEMENT NO INSUL SLEEVE 1 TIME IND 3 AMP 90 V OR LESS COLOR CODE BLUE ALTERNATE ITEM	EA	REF	*	*	*	*	*	*			7-2	F3
XDCZZ		FOR F1 THRU F24 356 (71400) BYL FUSE INDICATING ALARM F4 COPPER ELEMENT, NO INSUL SLEEVE 1 TIME IND 3 AMP 90 V OR LESS COLOR CODE BLUE ALTERNATE ITEM	EA	REF	*	*	*	*	*	*			7-2	F4
XDCZZ		FOR F1 THRU F24 356 (71400) BYL FUSE INDICATING ALARM F5 COPPER ELEMENT, NO INSUL SLEEVE 1 TIME IND 3 AMP 90 V OR LESS COLOR CODE BLUE ALTERNATE ITEM	EA	REF	*	*	*	*	*	*			7-2	F5
XDCZZ		FOR F1 THRU F24 356 (71400) BYL FUSE INDICATING ALARM F6 COPPER ELEMENT, NO INSUL SLEEVE 1 TIME IND 3 AMP 90 V OR LESS COLOR CODE BLUE ALTERNATE ITEM	EA	REF	*	*	*	*	*	*			7-2	F6
XDCZZ		FOR F1 THRU F24 356 (71400) BYL FUSE INDICATING ALARM F7 COPPER ELEMENT, NO INSUL SLEEVE 1 TIME IND 3 AMP 90 V OR LESS COLOR CODE BLUE ALTERNATE ITEM	EA	REF	*	*	*	*	*	*			7-2	F7
XDCZZ		FOR F1 THRU F24 356 (71400) BYL FUSE INDICATING ALARM F8 COPPER ELEMENT, NO INSUL SLEEVE 1 TIME IND 3 AMP 90 V OR LESS COLOR CODE BLUE ALTERNATE ITEM	EA	REF	*	*	*	*	*	*			7-2	F8
XDCZZ		FOR F1 THRU F24 356 (71400) BYL FUSE INDICATING ALARM F9 COPPER ELEMENT, NO INSUL SLEEVE 1 TIME IND 3 AMP 90 V OR LESS COLOR CODE BLUE ALTERNATE ITEM	EA	REF	*	*	*	*	*	*			7-2	F9
XDCZZ		FOR F1 THRU F24 356 (71400) BYL FUSE INDICATING ALARM F10 COPPER ELEMENT, NO INSUL SLEEVE 1 TIME IND 3 AMP 90 V OR LESS COLOR CODE BLUE ALTERNATE ITEM	EA	REF	*	*	*	*	*	*			7-2	F10
XDCZZ		FOR F1 THRU F24 356 (71400) BYL FUSE INDICATING ALARM F11 COPPER ELEMENT, NO INSUL SLEEVE 1 TIME IND 3 AMP 90 V OR LESS COLOR CODE BLUE ALTERNATE ITEM	EA	REF	*	*	*	*	*	*			7-2	F11
XDCZZ		FOR F1 THRU F24 356 (71400) BYL FUSE INDICATING ALARM F12 COPPER NO INSUL SLEEVE 1 TIME IND 3 AMP 90 V OR LESS COLOR CODE BLUE ALTERNATE ITEM	EA	REF	*	*	*	*	*	*			7-2	F12



SECTION II

T M I I - 5 9 2 0 - 2 0 2 - 3 4 P

(1) SMR CODE	(2) FEDERAL STOCK NUMBER	(3) DESCRIPTION REFERENCE NUMBER & NF2 CODE USABLE ON CODE	(4) UNIT OF MEAS	(5) QTY INC IN UNIT	(6) 30-DAY DS MAINT ALLOWANCE			(7) 30-DAY GS MAINT ALLOWANCE			(8) 1-YR ALW PER 100 EQUIP CNTGCT	(9) DEPOT MAINT ALW PER 100 EQUIP	(10) ILLUSTRATION	
					(a)	(b)	(c)	(a)	(b)	(c)			(a)	(b)
					1-20	21-50	51-100	1-20	21-50	51-100			FIGURE NO	ITEM NO.
XDCZZ		FUSE INDICATING ALARM F13 COPPER... ELEMENT, NO INSUL SLEEVE 1 TIME IND 3 AMP 90 V OR LESS COLOR CODE BLUE ALTERNATE ITEM FOR F1 THRU F24 356 (71400) BYL	EA	REF	*	*	*	*	*	*			7-2	F13
XDCZZ		FUSE INDICATING ALARM F14 COPPER... ELEMENT, NO INSUL SLEEVE 1 TIME IND 3 AMP 90 V OR LESS COLOR CODE BLUE ALTERNATE ITEM FOR F1 THRU F24 356 (71400) BYL	EA	REF	*	*	*	*	*	*			7-2	F14
XDCZZ		FUSE INDICATING ALARM F15 COPPER... ELEMENT, NO INSUL SLEEVE 1 TIME IND 3 AMP 90 V OR LESS COLOR CODE BLUE ALTERNATE ITEM FOR F1 THRU F24 356 (71400) BYL	EA	REF	*	*	*	*	*	*			7-2	F15
XDCZZ		FUSE INDICATING ALARM F16 COPPER... ELEMENT, NO INSUL SLEEVE 1 TIME IND 3 AMP 90 V OR LESS COLOR CODE BLUE ALTERNATE ITEM FOR F1 THRU F24 356 (71400) BYL	EA	REF	*	*	*	*	*	*			7-2	F16
XDCZZ		FUSE INDICATING ALARM F17 COPPER... ELEMENT, NO INSUL SLEEVE 1 TIME IND 3 AMP 90 V OR LESS COLOR CODE BLUE ALTERNATE ITEM FOR F1 THRU F24 356 (71400) BYL	EA	REF	*	*	*	*	*	*			7-2	F17
XDCZZ		FUSE INDICATING ALARM F18 COPPER... ELEMENT, NO INSUL SLEEVE 1 TIME IND 3 AMP 90 V OR LESS COLOR CODE BLUE ALTERNATE ITEM FOR F1 THRU F24 356 (71400) BYL	EA	REF	*	*	*	*	*	*			7-2	F18
XDCZZ		FUSE INDICATING ALARM F19 COPPER... ELEMENT, NO INSUL SLEEVE 1 TIME IND 3 AMP 90 V OR LESS COLOR CODE BLUE ALTERNATE ITEM FOR F1 THRU F24 356 (71400) BYL	EA	REF	*	*	*	*	*	*			7-2	F19
XDCZZ		FUSE INDICATING ALARM F20 COPPER... ELEMENT, NO INSUL SLEEVE 1 TIME IND 3 AMP 90 V OR LESS COLOR CODE BLUE ALTERNATE ITEM FOR F1 THRU F24 356 (71400) BYL	EA	REF	*	*	*	*	*	*			7-2	F20
XDCZZ		FUSE INDICATING ALARM F21 COPPER... ELEMENT, NO INSUL SLEEVE 1 TIME IND 3 AMP 90 V OR LESS COLOR CODE BLUE ALTERNATE ITEM FOR F1 THRU F24 356 (71400) BYL	EA	REF	*	*	*	*	*	*			7-2	F21
XDCZZ		FUSE INDICATING ALARM F22 COPPER... ELEMENT, NO INSUL SLEEVE 1 TIME IND 3 AMP 90 V OR LESS COLOR CODE BLUE ALTERNATE ITEM FOR F1 THRU F24 356 (71400) BYL	EA	REF	*	*	*	*	*	*			7-2	F22
XDCZZ		FUSE INDICATING ALARM F23 COPPER... ELEMENT, NO INSUL SLEEVE 1 TIME IND 3 ALTERNATE ITEM FOR F1 THRU F24 356 (71400) BYL	EA	REF	*	*	*	*	*	*			7-2	F23
		CONTINUED												



## SECTION II

TM 11-5920-202-34P

(1) SMR CODE	(2) FEDERAL STOCK NUMBER	(3) DESCRIPTION REFERENCE NUMBER & MFR. CODE    USABLE ON CODE		(4) UNIT OF MEAS	(5) QTY INC IN UNIT	(6) 30-DAY DS MAINT ALLOWANCE			(7) 30-DAY GS MAINT ALLOWANCE			(8) 1-YR ALW PER 100 EQUIP CNTGCT	(9) DEPOT MAINT ALW PER 100 EQUIP	(10) ILLUSTRATION		
						(a)	(b)	(c)	(a)	(b)	(c)			(a)	(b)	
						1-20	21-50	51-100	1-20	21-50	51-100			FIGURE NO.	ITEM NO.	
		CONTINUED														
PACZZ	5920-122-3775	THRU F24 35H (71400) BYL FUSE, INDICATING ALARM F10 COPPER..... ELEMENT NO INSUL SLEEVE 90 V OR LESS COLOR CODE GREEN ALTERNATE ITEM FOR F1	EA	REF	*	*	*	*	*	*		5	7-2	F10		
PACZZ	5920-122-3775	THRU F24 35H (71400) BYL FUSE, INDICATING ALARM F11 COPPER..... ELEMENT NO INSUL SLEEVE 90 V OR LESS COLOR CODE GREEN ALTERNATE ITEM FOR F1	EA	REF	*	*	*	*	*	*		5	7-2	F11		
PACZZ	5920-122-3775	THRU F24 35H (71400) BYL FUSE, INDICATING ALARM F12 COPPER..... ELEMENT NO INSUL SLEEVE 90 V OR LESS COLOR CODE GREEN ALTERNATE ITEM FOR F1	EA	REF	*	*	*	*	*	*		5	7-2	F12		
PACZZ	5920-122-3775	THRU F24 35H (71400) BYL FUSE, INDICATING ALARM F13 COPPER..... ELEMENT NO INSUL SLEEVE 90 V OR LESS COLOR CODE GREEN ALTERNATE ITEM FOR F1	EA	REF	*	*	*	*	*	*		5	7-2	F13		
PACZZ	5920-122-3775	THRU F24 35H (71400) BYL FUSE, INDICATING ALARM F14 COPPER..... ELEMENT NO INSUL SLEEVE 90 V OR LESS COLOR CODE GREEN ALTERNATE ITEM FOR F1	EA	REF	*	*	*	*	*	*		5	7-2	F14		
PACZZ	5920-122-3775	THRU F24 35H (71400) BYL FUSE, INDICATING ALARM F15 COPPER..... ELEMENT NO INSUL SLEEVE 90 V OR LESS COLOR CODE GREEN ALTERNATE ITEM FOR F1	EA	REF	*	*	*	*	*	*		5	7-2	F15		
PACZZ	5920-122-3775	THRU F24 35H (71400) BYL FUSE, INDICATING ALARM F16 COPPER..... ELEMENT NO INSUL SLEEVE 90 V OR LESS COLOR CODE GREEN ALTERNATE ITEM FOR F1	EA	REF	*	*	*	*	*	*		5	7-2	F16		
PACZZ	5920-122-3775	THRU F24 35H (71400) BYL FUSE, INDICATING ALARM F17 COPPER..... ELEMENT NO INSUL SLEEVE 90 V OR LESS COLOR CODE GREEN ALTERNATE ITEM FOR F1	EA	REF	*	*	*	*	*	*		5	7-2	F17		
PACZZ	5920-122-3775	THRU F24 35H (71400) BYL FUSE, INDICATING ALARM F18 COPPER..... ELEMENT NO INSUL SLEEVE 90 V OR LESS COLOR CODE GREEN ALTERNATE ITEM FOR F1	EA	REF	*	*	*	*	*	*		5	7-2	F18		
PACZZ	5920-122-3775	THRU F24 35H (71400) BYL FUSE, INDICATING ALARM F19 COPPER..... ELEMENT NO INSUL SLEEVE 90 V OR LESS COLOR CODE GREEN ALTERNATE ITEM FOR F1	EA	REF	*	*	*	*	*	*		5	7-2	F19		
		THRU F24 35H (71400) BYL														

SECTION II

TM 11-5920-202-34P

(1) SMR CODE	(2) FEDERAL STOCK NUMBER	(3) DESCRIPTION REFERENCE NUMBER & MFR. CODE USABLE ON CODE	(4) UNIT OF MEAS	(5) QTY INC IN UNIT	(6) 30-DAY DS MAINT ALLOWANCE			(7) 30-DAY GS MAINT ALLOWANCE			(8) 1-YR ALW PER 100 EQUIP CRTGCT	(9) DEPOT MAINT ALW PER 100 EQUIP	(10) ILLUSTRATION	
					(a)	(b)	(c)	(a)	(b)	(c)			(a)	(b)
					1-20	21-50	51-100	1-20	21-50	51-100			FIGURE NO.	ITEM NO.
PACZZ	5920-122-3775	FUSE, INDICATING ALARM F20 COPPER..... ELEMENT NO INSUL SLEEVE 90 V OR LESS CULUR CODE GREEN ALTERNATE ITEM FOR F1 THRU F24 35H (71400) BYL	EA	REF	*	*	*	*	*	*	5	7-2	F20	
PACZZ	5920-122-3775	FUSE, INDICATING ALARM F21 COPPER..... ELEMENT NO INSUL SLEEVE 90 V OR LESS CULUR CODE GREEN ALTERNATE ITEM FOR F1 THRU F24 35H (71400) BYL	EA	REF	*	*	*	*	*	*	5	7-2	F21	
PACZZ	5920-122-3775	FUSE, INDICATING ALARM F22 COPPER..... ELEMENT NO INSUL SLEEVE 90 V OR LESS CULUR CODE GREEN ALTERNATE ITEM FOR F1 THRU F24 35H (71400) BYL	EA	REF	*	*	*	*	*	*	5	7-2	F22	
PACZZ	5920-122-3775	FUSE, INDICATING ALARM F23 COPPER..... ELEMENT NO INSUL SLEEVE 90 V OR LESS CULUR CODE GREEN ALTERNATE ITEM FOR F1 THRU F24 35H (71400) BYL	EA	REF	*	*	*	*	*	*	5	7-2	F23	
PACZZ	5920-122-3775	FUSE, INDICATING ALARM F24 COPPER..... ELEMENT NO INSUL SLEEVE 90 V OR LESS CULUR CODE GREEN ALTERNATE ITEM FOR F1 THRU F24 35H (71400) BYL	EA	REF	*	*	*	*	*	*	5	7-2	F24	
PAQZZ	6240-155-7837	LAMP, INCANDESCENT LMI 24 V SLIDE BASE. TYPE 24c (24440) BYL	EA	1	*	*	*	*	*	*	20	7-2	LMI	
KXQZZ		LENS, INDICATING LIGHT NO-REF-DESIG RED 5/8 IN LG X 5/8 IN DIA 01-621 (72619) BYL	EA	1	*	*	*	*	*	*				
PAFZZ	6210-984-6167	LIGHT, INDICATOR NO-REF-DESIG W/O LENS SLIDE BASE TYPE 2 IN LG X 13/16 IN DIA 52428-9 (72619) BYL	EA	1	*	*	*	*	*	*	5			
KDFZZ		RELAY, ARMATURE K1 400 OHM RESISTANCE .. 24 VDC OPER VOLTAGE GMA1C24VDC (19412) BYL	EA	1	*	*	*	*	*	*		7-2	K1	
KDFZZ		RESISTOR, FIXED, WIRE WOUND R1 600 OHM.. PERMSPT 10 x 1-3/4 IN LG X 5/16 IN DIA 134M6015 (83827) BYL	EA	1	*	*	*	*	*	*		7-2	R1	
KDFZZ		RESISTOR, FIXED, WIRE WOUND R2 500 OHM.. PERMSPT 10 x 134M5015 (83827) BYL	EA	1	*	*	*	*	*	*		7-2	R2	
KDFZZ		TERMINAL BOARD T82 20 DOUBLE SCREW..... BARRIER TYPE 8-1/4 IN LG X 7/8 IN W X 3/8 IN H 600-20C (75382) BYL	EA	1	*	*	*	*	*	*			T82	
KDFZZ		TERMINAL BOARD T83 10 DOUBLE SCREW..... BARRIER TYPE 4-3/8 IN LG X 7/8 IN W X 3/8 IN H 600-10C (75382) BYL	EA	1	*	*	*	*	*	*			T83	
PACZZ	5920-199-9501	FUSE, INDICATING ALARM F1 COPPER..... CONTINUED	EA	24	*	*	*	*	*	*	5	7-2	F1	

(1) SMR CODE	(2) FEDERAL STOCK NUMBER	(3) DESCRIPTION REFERENCE NUMBER & MFR. CODE USABLE ON CODE	(4) UNIT OF MEAS	(5) QTY INC IN UNIT	(6) 30-DAY DS MAINT ALLOWANCE			(7) 30-DAY GS MAINT ALLOWANCE			(8) 1-YR ALW PER 100 EQUIP CNTGCT	(9) DEPOT MAINT ALW PER 100 EQUIP	(10) ILLUSTRATION	
					(a)	(b)	(c)	(a)	(b)	(c)			(a)	(b)
					1-20	21-50	51-100	1-20	21-50	51-100			FIGURE NO.	ITEM NO.
PACZZ	5920-199-9501	CONTINUED ELEMENT CERAMIC INSUL SLEEVE 1 TIME IND 1-1/3 AMP 160 V OR LESS COLOR CODE WHITE 35K (71400) BYM FUSE, INDICATING ALARM F2 COPPER.....	EA	REF	*	*	*	*	*	*		5	7-2	F2
PACZZ	5920-199-9501	ELEMENT CERAMIC INSUL SLEEVE 1 TIME IND 1-1/3 AMP 160 V OR LESS COLOR CODE WHITE 35K (71400) BYM FUSE, INDICATING ALARM F3 COPPER.....	EA	REF	*	*	*	*	*	*		5	7-2	F3
PACZZ	5920-199-9501	ELEMENT CERAMIC INSUL SLEEVE 1 TIME IND 1-1/3 AMP 160 V OR LESS COLOR CODE WHITE 35K (71400) BYM FUSE, INDICATING ALARM F4 COPPER.....	EA	REF	*	*	*	*	*	*		5	7-2	F4
PACZZ	5920-199-9501	ELEMENT CERAMIC INSUL SLEEVE 1 TIME IND 1-1/3 AMP 160 V OR LESS COLOR CODE WHITE 35K (71400) BYM FUSE, INDICATING ALARM F5 COPPER.....	EA	REF	*	*	*	*	*	*		5	7-2	F5
PACZZ	5920-199-9501	ELEMENT CERAMIC INSUL SLEEVE 1 TIME IND 1-1/3 AMP 160 V OR LESS COLOR CODE WHITE 35K (71400) BYM FUSE, INDICATING ALARM F6 COPPER.....	EA	REF	*	*	*	*	*	*		5	7-2	F6
PACZZ	5920-199-9501	ELEMENT CERAMIC INSUL SLEEVE 1 TIME IND 1-1/3 AMP 160 V OR LESS COLOR CODE WHITE 35K (71400) BYM FUSE, INDICATING ALARM F7 COPPER.....	EA	REF	*	*	*	*	*	*		5	7-2	F7
PACZZ	5920-199-9501	ELEMENT CERAMIC INSUL SLEEVE 1 TIME IND 1-1/3 AMP 160 V OR LESS COLOR CODE WHITE 35K (71400) BYM FUSE, INDICATING ALARM F8 COPPER.....	EA	REF	*	*	*	*	*	*		5	7-2	F8
PACZZ	5920-199-9501	ELEMENT CERAMIC INSUL SLEEVE 1 TIME IND 1-1/3 AMP 160 V OR LESS COLOR CODE WHITE 35K (71400) BYM FUSE, INDICATING ALARM F9 COPPER.....	EA	REF	*	*	*	*	*	*		5	7-2	F9
PACZZ	5920-199-9501	ELEMENT CERAMIC INSUL SLEEVE 1 TIME IND 1-1/3 AMP 160 V OR LESS COLOR CODE WHITE 35K (71400) BYM FUSE, INDICATING ALARM F10 COPPER.....	EA	REF	*	*	*	*	*	*		5	7-2	F10
PACZZ	5920-199-9501	ELEMENT CERAMIC INSUL SLEEVE 1 TIME IND 1-1/3 AMP 160 V OR LESS COLOR CODE WHITE 35K (71400) BYM FUSE, INDICATING ALARM F11 COPPER.....	EA	REF	*	*	*	*	*	*		5	7-2	F11
PACZZ	5920-199-9501	ELEMENT CERAMIC INSUL SLEEVE 1 TIME IND 1-1/3 AMP 160 V OR LESS COLOR CODE WHITE 35K (71400) BYM FUSE, INDICATING ALARM F12 COPPER.....	EA	REF	*	*	*	*	*	*		5	7-2	F12
PACZZ	5920-199-9501	ELEMENT CERAMIC INSUL SLEEVE 1 TIME IND 1-1/3 AMP 160 V OR LESS COLOR CODE WHITE 35K (71400) BYM FUSE, INDICATING ALARM F13 COPPER.....	EA	REF	*	*	*	*	*	*		5	7-2	F13

(1) SMR CODE	(2) FEDERAL STOCK NUMBER	(3) DESCRIPTION REFERENCE NUMBER & MFR. CODE USABLE ON CODE	(4) UNIT OF MEAS	(5) QTY INC IN UNIT	(6) 30-DAY DS MAINT ALLOWANCE			(7) 30-DAY GS MAINT ALLOWANCE			(8) 1-YR ALW PER 100 EQUIP CNTGCT	(9) DEPOT MAINT ALW PER 100 EQUIP	(10) ILLUSTRATION	
					(a)	(b)	(c)	(a)	(b)	(c)			(a)	(b)
					1-20	21-50	51-100	1-20	21-50	51-100			FIGURE NO.	ITEM NO.
PACZZ	5920-199-9501	FUSE, INDICATING ALARM F14 COPPER..... ELEMENT CERAMIC INSUL SLEEVE 1 TIME IND 1-1/3 AMP 160 V OR LESS COLOR CODE WHITE 35K (71400) BYM	EA	REF	*	*	*	*	*	*		5	7-2	F14
PACZZ	5920-199-9501	FUSE, INDICATING ALARM F15 COPPER..... ELEMENT CERAMIC INSUL SLEEVE 1 TIME IND 1-1/3 AMP 160 V OR LESS COLOR CODE WHITE 35K (71400) BYM	EA	REF	*	*	*	*	*	*		5	7-2	F15
PACZZ	5920-199-9501	FUSE, INDICATING ALARM F16 COPPER..... ELEMENT CERAMIC INSUL SLEEVE 1 TIME IND 1-1/3 AMP 160 V OR LESS COLOR CODE WHITE 35K (71400) BYM	EA	REF	*	*	*	*	*	*		5	7-2	F16
PACZZ	5920-199-9501	FUSE, INDICATING ALARM F17 COPPER..... ELEMENT CERAMIC INSUL SLEEVE 1 TIME IND 1-1/3 AMP 160 V OR LESS COLOR CODE WHITE 35K (71400) BYM	EA	REF	*	*	*	*	*	*		5	7-2	F17
PACZZ	5920-199-9501	FUSE, INDICATING ALARM F18 COPPER..... ELEMENT CERAMIC INSUL SLEEVE 1 TIME IND 1-1/3 AMP 160 V OR LESS COLOR CODE WHITE 35K (71400) BYM	EA	REF	*	*	*	*	*	*		5	7-2	F18
PACZZ	5920-199-9501	FUSE, INDICATING ALARM F19 COPPER..... ELEMENT CERAMIC INSUL SLEEVE 1 TIME IND 1-1/3 AMP 160 V OR LESS COLOR CODE WHITE 35K (71400) BYM	EA	REF	*	*	*	*	*	*		5	7-2	F19
PACZZ	5920-199-9501	FUSE, INDICATING ALARM F20 COPPER..... ELEMENT CERAMIC INSUL SLEEVE 1 TIME IND 1-1/3 AMP 160 V OR LESS COLOR CODE WHITE 35K (71400) BYM	EA	REF	*	*	*	*	*	*		5	7-2	F20
PACZZ	5920-199-9501	FUSE, INDICATING ALARM F21 COPPER..... ELEMENT CERAMIC INSUL SLEEVE 1 TIME IND 1-1/3 AMP 160 V OR LESS COLOR CODE WHITE 35K (71400) BYM	EA	REF	*	*	*	*	*	*		5	7-2	F21
PACZZ	5920-199-9501	FUSE, INDICATING ALARM F22 COPPER..... ELEMENT CERAMIC INSUL SLEEVE 1 TIME IND 1-1/3 AMP 160 V OR LESS COLOR CODE WHITE 35K (71400) BYM	EA	REF	*	*	*	*	*	*		5	7-2	F22
PACZZ	5920-199-9501	FUSE, INDICATING ALARM F23 COPPER..... ELEMENT CERAMIC INSUL SLEEVE 1 TIME IND 1-1/3 AMP 160 V OR LESS COLOR CODE WHITE 35K (71400) BYM	EA	REF	*	*	*	*	*	*		5	7-2	F23
PACZZ	5920-199-9501	FUSE, INDICATING ALARM F24 COPPER..... ELEMENT CERAMIC INSUL SLEEVE 1 TIME IND 1-1/3 AMP 160 V OR LESS COLOR CODE WHITE 35K (71400) BYM	EA	REF	*	*	*	*	*	*		5	7-2	F24
PACZZ	5905-080-6833	FUSE, INDICATING ALARM F1 COPPER..... ELEMENT CERAMIC INSUL SLEEVE 1 TIME IND 1/2 AMP 160 V OR LESS COLOR CODE RED ALTERNATE ITEM FOR F1 THRU F24 35J (71400) BYM	EA	24	*	*	*	*	*	*		5	7-2	F1
PACZZ	5905-080-6833	FUSE, INDICATING ALARM F2 COPPER..... ELEMENT CERAMIC INSUL SLEEVE 1 TIME IND 1/2 AMP 160 V OR LESS COLOR CODE RED CONTINUED	EA	REF	*	*	*	*	*	*		5	7-2	F2

SECTION II

TM 11-5920-202-34P

(1) SMR CODE	(2) FEDERAL STOCK NUMBER	(3) DESCRIPTION REFERENCE NUMBER & MFR. CODE USABLE ON CODE	(4) UNIT OF MEAS	(5) QTY INC IN UNIT	(6) 30-DAY DS MAINT ALLOWANCE			(7) 30-DAY CS MAINT ALLOWANCE			(8) 1-YR ALW PER 100 EQUIP CNTGCT	(9) DEPOT MAINT ALW PER 100 EQUIP	(10) ILLUSTRATION	
					(a)	(b)	(c)	(a)	(b)	(c)			(a)	(b)
					1-20	21-50	51-100	1-20	21-50	51-100			FIGURE NO.	ITEM NO.
		CONTINUED												
PACZZ	5905-080-6833	ALTERNATE ITEM FOR F1 THRU F24 35J (71400) BYM FUSE, INDICATING ALARM F3 COPPER..... ELEMENT CERAMIC INSUL SLEEVE 1 TIME IND 1/2 AMP 160 V OR LESS COLOR CODE RED ALTERNATE ITEM FOR F1 THRU F24	EA	REF	*	*	*	*	*	*	5	7-2	F3	
PACZZ	5905-080-6833	35J (71400) BYM FUSE, INDICATING ALARM F4 COPPER..... ELEMENT CERAMIC INSUL SLEEVE 1 TIME IND 1/2 AMP 160 V OR LESS COLOR CODE RED ALTERNATE ITEM FOR F1 THRU F24	EA	REF	*	*	*	*	*	*	5	7-2	F4	
PACZZ	5905-080-6833	35J (71400) BYM FUSE, INDICATING ALARM F5 COPPER..... ELEMENT CERAMIC INSUL SLEEVE 1 TIME IND 1/2 AMP 160 V OR LESS COLOR CODE RED ALTERNATE ITEM FOR F1 THRU F24	EA	REF	*	*	*	*	*	*	5	7-2	F5	
PACZZ	5905-080-6833	35J (71400) BYM FUSE, INDICATING ALARM F6 COPPER..... ELEMENT CERAMIC INSUL SLEEVE 1 TIME IND 1/2 AMP 160 V OR LESS COLOR CODE RED ALTERNATE ITEM FOR F1 THRU F24	EA	REF	*	*	*	*	*	*	5	7-2	F6	
PACZZ	5905-080-6833	35J (71400) BYM FUSE, INDICATING ALARM F7 COPPER..... ELEMENT CERAMIC INSUL SLEEVE 1 TIME IND 1/2 AMP 160 V OR LESS COLOR CODE RED ALTERNATE ITEM FOR F1 THRU F24	EA	REF	*	*	*	*	*	*	5	7-2	F7	
PACZZ	5905-080-6833	35J (71400) BYM FUSE, INDICATING ALARM F8 COPPER..... ELEMENT CERAMIC INSUL SLEEVE 1 TIME IND 1/2 AMP 160 V OR LESS COLOR CODE RED ALTERNATE ITEM FOR F1 THRU F24	EA	REF	*	*	*	*	*	*	5	7-2	F8	
PACZZ	5905-080-6833	35J (71400) BYM FUSE, INDICATING ALARM F9 COPPER..... ELEMENT CERAMIC INSUL SLEEVE 1 TIME IND 1/2 AMP 160 V OR LESS COLOR CODE RED ALTERNATE ITEM FOR F1 THRU F24	EA	REF	*	*	*	*	*	*	5	7-2	F9	
PACZZ	5905-080-6833	35J (71400) BYM FUSE, INDICATING ALARM F10 COPPER..... ELEMENT CERAMIC INSUL SLEEVE 1 TIME IND 1/2 AMP 160 V OR LESS COLOR CODE RED ALTERNATE ITEM FOR F1 THRU F24	EA	REF	*	*	*	*	*	*	5	7-2	F10	
PACZZ	5905-080-6833	35J (71400) BYM FUSE, INDICATING ALARM F11 COPPER..... ELEMENT CERAMIC INSUL SLEEVE 1 TIME IND 1/2 AMP 160 V OR LESS COLOR CODE RED ALTERNATE ITEM FOR F1 THRU F24	EA	REF	*	*	*	*	*	*	5	7-2	F11	
PACZZ	5905-080-6833	35J (71400) BYM FUSE, INDICATING ALARM F12 COPPER..... ELEMENT CERAMIC INSUL SLEEVE 1 TIME IND 1/2 AMP 160 V OR LESS COLOR CODE RED ALTERNATE ITEM FOR F1 THRU F24	EA	REF	*	*	*	*	*	*	5	7-2	F12	

SECTION II

TM 11-5920-202-34P

(1) SMR CODE	(2) FEDERAL STOCK NUMBER	(3) DESCRIPTION REFERENCE NUMBER & MFR CODE USABLE ON CODE	(4) UNIT OF MEAS	(5) QTY INC IN UNIT	(6) 30-DAY DS MAINT ALLOWANCE			(7) 30-DAY GS MAINT ALLOWANCE			(8) 1-YR ALW PER 100 EQUIP CNTGCV	(9) DEPOT MAINT ALW PER 100 EQUIP	(10) ILLUSTRATION	
					(a)	(b)	(c)	(c)	(b)	(c)			(a)	(b)
					1-20	21-50	51-100	1-20	21-50	51-100			FIGURE NO.	ITEM NO.
PACZZ	5905-080-6833	FUSE, INDICATING ALARM F13 COPPER..... ELEMENT CERAMIC INSUL SLEEVE 1 TIME IND 1/2 AMP 160 V OR LESS COLOR CODE RED ALTERNATE ITEM FOR F1 THRU F24 35J (71400) BYM	EA	REF	*	*	*	*	*	*		5	7-2	F13
PACZZ	5905-080-6833	FUSE, INDICATING ALARM F14 COPPER..... ELEMENT CERAMIC INSUL SLEEVE 1 TIME IND 1/2 AMP 160 V OR LESS COLOR CODE RED ALTERNATE ITEM FOR F1 THRU F24 35J (71400) BYM	EA	REF	*	*	*	*	*	*		5	7-2	F14
PACZZ	5905-080-6833	FUSE, INDICATING ALARM F15 COPPER..... ELEMENT CERAMIC INSUL SLEEVE 1 TIME IND 1/2 AMP 160 V OR LESS COLOR CODE RED ALTERNATE ITEM FOR F1 THRU F24 35J (71400) BYM	EA	REF	*	*	*	*	*	*		5	7-2	F15
PACZZ	5905-080-6833	FUSE, INDICATING ALARM F16 COPPER..... ELEMENT CERAMIC INSUL SLEEVE 1 TIME IND 1/2 AMP 160 V OR LESS COLOR CODE RED ALTERNATE ITEM FOR F1 THRU F24 35J (71400) BYM	EA	REF	*	*	*	*	*	*		5	7-2	F16
PACZZ	5905-080-6833	FUSE, INDICATING ALARM F17 COPPER..... ELEMENT CERAMIC INSUL SLEEVE 1 TIME IND 1/2 AMP 160 V OR LESS COLOR CODE RED ALTERNATE ITEM FOR F1 THRU F24 35J (71400) BYM	EA	REF	*	*	*	*	*	*		5	7-2	F17
PACZZ	5905-080-6833	FUSE, INDICATING ALARM F18 COPPER..... ELEMENT CERAMIC INSUL SLEEVE 1 TIME IND 1/2 AMP 160 V OR LESS COLOR CODE RED ALTERNATE ITEM FOR F1 THRU F24 35J (71400) BYM	EA	REF	*	*	*	*	*	*		5	7-2	F18
PACZZ	5905-080-6833	ELEMENT CERAMIC INSUL SLEEVE 1 TIME IND 1/2 AMP 160 V OR LESS COLOR CODE RED ALTERNATE ITEM FOR F1 THRU F24 35J (71400) BYM												
PACZZ	5905-080-6833	FUSE, INDICATING ALARM F20 COPPER..... ELEMENT CERAMIC INSUL SLEEVE 1 TIME IND 1/2 AMP 160 V OR LESS COLOR CODE RED ALTERNATE ITEM FOR F1 THRU F24 35J (71400) BYM	EA	REF	*	*	*	*	*	*		5	7-2	F20
PACZZ	5905-080-6833	FUSE, INDICATING ALARM F21 COPPER..... ELEMENT CERAMIC INSUL SLEEVE 1 TIME IND 1/2 AMP 160 V OR LESS COLOR CODE RED ALTERNATE ITEM FOR F1 THRU F24 35J (71400) BYM	EA	REF	*	*	*	*	*	*		5	7-2	F21
PACZZ	5905-080-6833	FUSE, INDICATING ALARM F22 COPPER..... ELEMENT CERAMIC INSUL SLEEVE 1 TIME IND 1/2 AMP 160 V OR LESS COLOR CODE RED ALTERNATE ITEM FOR F1 THRU F24 35J (71400) BYM	EA	REF	*	*	*	*	*	*		5	7-2	F22
PACZZ	5905-080-6833	FUSE, INDICATING ALARM F23 COPPER..... ELEMENT CERAMIC INSUL SLEEVE 1 TIME IND CONTINUED	EA	REF	*	*	*	*	*	*		5	7-2	F23



SECTION II

TM 11-5920-202-34P

(1) SAR CODE	(2) FEDERAL STOCK NUMBER	(3) DESCRIPTION REFERENCE NUMBER & MFR. CODE USABLE ON CODE	(4) UNIT OF MEAS	(5) QTY INC IN UNIT	(6) 30-DAY DS MAINT ALLOWANCE			(7) 30-DAY GS MAINT ALLOWANCE			(8) 1-YR ALW PER 100 EQUIP CNTGCT	(9) DEPOT MAINT ALW PER 100 EQUIP	(10) ILLUSTRATION	
					(a)	(b)	(c)	(a)	(b)	(c)			(a)	(b)
					1-20	21-50	51-100	1-20	21-50	51-100			FIGURE NO.	ITEM NO.
		CONTINUED												
PACZZ	5905-080-6833	1/2 AMP 160 V OR LESS COLOR CODE RED ALTERNATE ITEM FOR F1 THRU F24 35J (71400) BYM	EA	REF	*	*	*	*	*	*	5	7-2	F24	
PACZZ	5920-850-1773	FUSE, INDICATING ALARM F24 COPPER..... ELEMENT CERAMIC INSUL SLEEVE 1 TIME IND 1/2 AMP 160 V OR LESS COLOR CODE RED ALTERNATE ITEM FOR F1 THRU F24 35J (71400) BYM	EA	24	*	*	*	*	*	*	5	7-2	F1	
PACZZ	5920-850-1773	FUSE, INDICATING ALARM F2 COPPER..... ELEMENT CERAMIC INSUL SLEEVE 1 TIME IND 2 AMP 160 V OR LESS COLOR CODE ORANGE ALTERNATE ITEM FOR F1 THRU F24 35L (71400) BYM	EA	REF	*	*	*	*	*	*	5	7-2	F2	
PACZZ	5920-850-1773	FUSE, INDICATING ALARM F3 COPPER..... ELEMENT CERAMIC INSUL SLEEVE 1 TIME IND 2 AMP 160 V OR LESS COLOR CODE ORANGE ALTERNATE ITEM FOR F1 THRU F24 35L (71400) BYM	EA	REF	*	*	*	*	*	*	5	7-2	F3	
PACZZ	5920-850-1773	FUSE, INDICATING ALARM F4 COPPER..... ELEMENT CERAMIC INSUL SLEEVE 1 TIME IND 2 AMP 160 V OR LESS COLOR CODE ORANGE ALTERNATE ITEM FOR F1 THRU F24 35L (71400) BYM	EA	REF	*	*	*	*	*	*	5	7-2	F4	
PACZZ	5920-850-1773	FUSE, INDICATING ALARM F5 COPPER..... ELEMENT CERAMIC INSUL SLEEVE 1 TIME IND 2 AMP 160 V OR LESS COLOR CODE ORANGE ALTERNATE ITEM FOR F1 THRU F24 35L (71400) BYM	EA	REF	*	*	*	*	*	*	5	7-2	F5	
PACZZ	5920-850-1773	FUSE, INDICATING ALARM F6 COPPER..... ELEMENT CERAMIC INSUL SLEEVE 1 TIME IND 2 AMP 160 V OR LESS COLOR CODE ORANGE ALTERNATE ITEM FOR F1 THRU F24 35L (71400) BYM	EA	REF	*	*	*	*	*	*	5	7-2	F6	
PACZZ	5920-850-1773	FUSE, INDICATING ALARM F7 COPPER..... ELEMENT CERAMIC INSUL SLEEVE 1 TIME IND 2 AMP 160 V OR LESS COLOR CODE ORANGE ALTERNATE ITEM FOR F1 THRU F24 35L (71400) BYM	EA	REF	*	*	*	*	*	*	5	7-2	F7	
PACZZ	5920-850-1773	FUSE, INDICATING ALARM F8 COPPER..... ELEMENT CERAMIC INSUL SLEEVE 1 TIME IND 2 AMP 160 V OR LESS COLOR CODE ORANGE ALTERNATE ITEM FOR F1 THRU F24 35L (71400) BYM	EA	REF	*	*	*	*	*	*	5	7-2	F8	
PACZZ	5920-850-1773	FUSE, INDICATING ALARM F9 COPPER..... ELEMENT CERAMIC INSUL SLEEVE 1 TIME IND 2 AMP 160 V OR LESS COLOR CODE ORANGE CONTINUED	EA	REF	*	*	*	*	*	*	5	7-2	F9	

SECTION II

TM 11-5920-202-34P

(1) SMR CODE	(2) FEDERAL STOCK NUMBER	(3) DESCRIPTION REFERENCE NUMBER & MFR. CODE USABLE ON CODE	(4) UNIT OF MEAS	(5) QTY INC IN UNIT	(6) 30-DAY D5 MAINT ALLOWANCE			(7) 30-DAY G5 MAINT ALLOWANCE			(8) 1-YR ALW PER 100 EQUIP CHTGCY	(9) DEPOT MAINT ALW PER 100 EQUIP	(10) ILLUSTRATION	
					(a) 1-20	(b) 21-50	(c) 51-100	(a) 1-20	(b) 21-50	(c) 51-100			(a) FIGURE NO.	(b) ITEM NO.
		CONTINUED												
PACZZ	5920-850-1773	ALTERNATE ITEM FOR F1 THRU F24 5L (71400) BYM USE, INDICATING ALARM F10 COPPER..... ELEMENT CERAMIC INSUL SLEEVE 1 TIME IND AMP 160 V OR LESS COLOR CODE ORANGE ALTERNATE ITEM FOR F1 THRU F24	EA	REF	*	*	*	*	*	*		5	7-2	F10
PACZZ	5920-850-1773	ALTERNATE ITEM FOR F1 THRU F24 5L (71400) BYM USE, INDICATING ALARM F11 COPPER..... ELEMENT CERAMIC INSUL SLEEVE 1 TIME IND AMP 160 V OR LESS COLOR CODE ORANGE ALTERNATE ITEM FOR F1 THRU F24	EA	REF	*	*	*	*	*	*		5	7-2	F11
PACZZ	5920-850-1773	ALTERNATE ITEM FOR F1 THRU F24 5L (71400) BYM USE, INDICATING ALARM F12 COPPER..... ELEMENT CERAMIC INSUL SLEEVE 1 TIME IND AMP 160 V OR LESS COLOR CODE ORANGE ALTERNATE ITEM FOR F1 THRU F24	EA	REF	*	*	*	*	*	*		5	7-2	F12
PACZZ	5920-850-1773	ALTERNATE ITEM FOR F1 THRU F24 5L (71400) BYM USE, INDICATING ALARM F13 COPPER..... ELEMENT CERAMIC INSUL SLEEVE 1 TIME IND AMP 160 V OR LESS COLOR CODE ORANGE ALTERNATE ITEM FOR F1 THRU F24	EA	REF	*	*	*	*	*	*		5	7-2	F13
PACZZ	5920-850-1773	ALTERNATE ITEM FOR F1 THRU F24 5L (71400) BYM USE, INDICATING ALARM F14 COPPER..... ELEMENT CERAMIC INSUL SLEEVE 1 TIME IND AMP 160 V OR LESS COLOR CODE ORANGE ALTERNATE ITEM FOR F1 THRU F24	EA	REF	*	*	*	*	*	*		5	7-2	F14
PACZZ	5920-850-1773	ALTERNATE ITEM FOR F1 THRU F24 5L (71400) BYM USE, INDICATING ALARM F15 COPPER..... ELEMENT CERAMIC INSUL SLEEVE 1 TIME IND AMP 160 V OR LESS COLOR CODE ORANGE ALTERNATE ITEM FOR F1 THRU F24	EA	REF	*	*	*	*	*	*		5	7-2	F15
PACZZ	5920-850-1773	ALTERNATE ITEM FOR F1 THRU F24 5L (71400) BYM USE, INDICATING ALARM F16 COPPER..... ELEMENT CERAMIC INSUL SLEEVE 1 TIME IND AMP 160 V OR LESS COLOR CODE ORANGE ALTERNATE ITEM FOR F1 THRU F24	EA	REF	*	*	*	*	*	*		5	7-2	F16
PACZZ	5920-850-1773	ALTERNATE ITEM FOR F1 THRU F24 5L (71400) BYM USE, INDICATING ALARM F17 COPPER..... ELEMENT CERAMIC INSUL SLEEVE 1 TIME IND AMP 160 V OR LESS COLOR CODE ORANGE ALTERNATE ITEM FOR F1 THRU F24	EA	REF	*	*	*	*	*	*		5	7-2	F17
PACZZ	5920-850-1773	ALTERNATE ITEM FOR F1 THRU F24 5L (71400) BYM USE, INDICATING ALARM F18 COPPER..... ELEMENT CERAMIC INSUL SLEEVE 1 TIME IND AMP 160 V OR LESS COLOR CODE ORANGE ALTERNATE ITEM FOR F1 THRU F24	EA	REF	*	*	*	*	*	*		5	7-2	F18
PACZZ	5920-850-1773	ALTERNATE ITEM FOR F1 THRU F24 5L (71400) BYM USE, INDICATING ALARM F19 COPPER..... ELEMENT CERAMIC INSUL SLEEVE 1 TIME IND AMP 160 V OR LESS COLOR CODE ORANGE ALTERNATE ITEM FOR F1 THRU F24	EA	REF	*	*	*	*	*	*		5	7-2	F19

SECTION II

TM 11-5920-202-34P

(1) SMR CODE	(2) FEDERAL STOCK NUMBER	(3) DESCRIPTION REFERENCE NUMBER & MFR. CODE USABLE ON CODE	(4) UNIT OF MEAS	(5) QTY INC IN UNIT	(6) 30-DAY DS MAINT ALLOWANCE			(7) 30-DAY GS MAINT ALLOWANCE			(8) 1-YR ALW PER 100 EQUIP CNTGCT	(9) DEPOT MAINT ALW PER 100 EQUIP	(10) ILLUSTRATION	
					(a)	(b)	(c)	(a)	(b)	(c)			(a)	(b)
					1-20	21-50	51-100	1-20	21-50	51-100			FIGURE NO.	ITEM NO.
PACZZ	5920-850-1773	FUSE, INDICATING ALARM F20 COPPER..... ELEMENT CERAMIC INSUL SLEEVE 1 TIME IND 2 AMP 160 V OR LESS COLOR CODE ORANGE ALTERNATE ITEM FOR F1 THRU F24 35L (71400) BYM	EA	REF	*	*	*	*	*	*		5	7-2	F20
PACZZ	5920-850-1773	FUSE, INDICATING ALARM F21 COPPER..... ELEMENT CERAMIC INSUL SLEEVE 1 TIME IND 2 AMP 160 V OR LESS COLOR CODE ORANGE ALTERNATE ITEM FOR F1 THRU F24 35L (71400) BYM	EA	REF	*	*	*	*	*	*		5	7-2	F21
PACZZ	5920-850-1773	FUSE, INDICATING ALARM F22 COPPER..... ELEMENT CERAMIC INSUL SLEEVE 1 TIME IND 2 AMP 160 V OR LESS COLOR CODE ORANGE ALTERNATE ITEM FOR F1 THRU F24 35L (71400) BYM	EA	REF	*	*	*	*	*	*		5	7-2	F22
PACZZ	5920-850-1773	FUSE, INDICATING ALARM F23 COPPER..... ELEMENT CERAMIC INSUL SLEEVE 1 TIME IND 2 AMP 160 V OR LESS COLOR CODE ORANGE ALTERNATE ITEM FOR F1 THRU F24 35L (71400) BYM	EA	REF	*	*	*	*	*	*		5	7-2	F23
PACZZ	5920-850-1773	FUSE, INDICATING ALARM F24 COPPER..... ELEMENT CERAMIC INSUL SLEEVE 1 TIME IND 2 AMP 160 V OR LESS COLOR CODE ORANGE ALTERNATE ITEM FOR F1 THRU F24 35L (71400) BYM	EA	REF	*	*	*	*	*	*		5	7-2	F24
XDCZZ		FUSE, INDICATING ALARM F1 COPPER..... ELEMENT GLASS INSUL SLEEVE 1 TIME IND 3/4 AMP 160 V OR LESS COLOR CODE TAN ALTERNATE ITEM FOR F1 THRU F24 35P (71400) BYM	EA	24	*	*	*	*	*	*			7-2	F1
XDCZZ		FUSE, INDICATING ALARM F2 COPPER..... ELEMENT GLASS INSUL SLEEVE 1 TIME IND 3/4 AMP 160 V OR LESS COLOR CODE TAN ALTERNATE ITEM FOR F1 THRU F24 35P (71400) BYM	EA	REF	*	*	*	*	*	*			7-2	F2
XLCZZ		FUSE, INDICATING ALARM F3 COPPER..... ELEMENT GLASS INSUL SLEEVE 1 TIME IND 3/4 AMP 160 V OR LESS COLOR CODE TAN ALTERNATE ITEM FOR F1 THRU F24 35P (71400) BYM	EA	REF	*	*	*	*	*	*			7-2	F3
XDCZZ		FUSE, INDICATING ALARM F4 COPPER..... ELEMENT GLASS INSUL SLEEVE 1 TIME IND 3/4 AMP 160 V OR LESS COLOR CODE TAN ALTERNATE ITEM FOR F1 THRU F24 35P (71400) BYM	EA	REF	*	*	*	*	*	*			7-2	F4
XDCZZ		FUSE, INDICATING ALARM F5 COPPER..... ELEMENT GLASS INSUL SLEEVE 1 TIME IND 3/4 AMP 160 V OR LESS COLOR CODE TAN ALTERNATE ITEM FOR F1 THRU F24 35P (71400) BYM	EA	REF	*	*	*	*	*	*			7-2	F5
XDCZZ		FUSE, INDICATING ALARM F6 COPPER..... ELEMENT GLASS INSUL SLEEVE 1 TIME IND ALTERNATE ITEM FOR F1 THRU F24 35P (71400) BYM	EA	REF	*	*	*	*	*	*			7-2	F6

SECTION II

TM 11-5920-202-34P

(1) SMR CODE	(2) FEDERAL STOCK NUMBER	(3) DESCRIPTION REFERENCE NUMBER & MFR. CODE USABLE ON CODE	(4) UNIT DF MEAS	(5) QTY INC SK UNIT	(6) 30-DAY DS MAINT ALLOWANCE			(7) 30-DAY GS MAINT ALLOWANCE			(8) 1-YR ALW PER 100 EQUIP CNTGCV	(9) DEPOT MAINT ALW PER JOB EQUIP	(10) ILLUSTRATION	
					(a)	(b)	(c)	(a)	(b)	(c)			(a)	(b)
					1-20	21-50	51-100	1-20	21-50	51-100			FIGURE NO.	ITEM NO.
		CONTINUED 3/4 AMP 160 V OR LESS COLOR CODE TAN ALTERNATE ITEM FOR F1 THRU F24 35P (71400) BYM												
XDZZ		FUSE, INDICATING ALARM F7 COPPER..... ELEMENT CLASS INSUL SLEEVE 1 TIME IND 3/4 AMP 160 V OR LESS COLOR CODE TAN ALTERNATE ITEM FOR F1 THRU F24 35P (71400) BYM	EA	REF	*	*	*	*	*	*			7-2	F7
XDZZ		FUSE, INDICATING ALARM F8 COPPER..... ELEMENT CLASS INSUL SLEEVE 1 TIME IND 3/4 AMP 160 V OR LESS COLOR CODE TAN ALTERNATE ITEM FOR F1 THRU F24 35P (71400) BYM	EA	REF	*	*	*	*	*	*			7-2	F8
XDZZ		FUSE, INDICATING ALARM F9 COPPER..... ELEMENT CLASS INSUL SLEEVE 1 TIME IND 3/4 AMP 160 V OR LESS COLOR CODE TAN ALTERNATE ITEM FOR F1 THRU F24 35P (71400) BYM	EA	REF	*	*	*	*	*	*			7-2	F9
XDZZ		FUSE, INDICATING ALARM F10 COPPER..... ELEMENT CLASS INSUL SLEEVE 1 TIME IND 3/4 AMP 160 V OR LESS COLOR CODE TAN ALTERNATE ITEM FOR F1 THRU F24 35P (71400) BYM	EA	REF	*	*	*	*	*	*			7-2	F10
XDZZ		FUSE, INDICATING ALARM F11 COPPER..... ELEMENT CLASS INSUL SLEEVE 1 TIME IND 3/4 AMP 160 V OR LESS COLOR CODE TAN ALTERNATE ITEM FOR F1 THRU F24 35P (71400) BYM	EA	REF	*	*	*	*	*	*			7-2	F11
XDZZ		FUSE, INDICATING ALARM F12 COPPER..... ELEMENT CLASS INSUL SLEEVE 1 TIME IND 3/4 AMP 160 V OR LESS COLOR CODE TAN ALTERNATE ITEM FOR F1 THRU F24 35P (71400) BYM	EA	REF	*	*	*	*	*	*			7-2	F12
XDZZ		FUSE, INDICATING ALARM F13 COPPER..... ELEMENT CLASS INSUL SLEEVE 1 TIME IND 3/4 AMP 160 V OR LESS COLOR CODE TAN ALTERNATE ITEM FOR F1 THRU F24 35P (71400) BYM	EA	REF	*	*	*	*	*	*			7-2	F13
XDZZ		FUSE, INDICATING ALARM F14 COPPER..... ELEMENT CLASS INSUL SLEEVE 1 TIME IND 3/4 AMP 160 V OR LESS COLOR CODE TAN ALTERNATE ITEM FOR F1 THRU F24 35P (71400) BYM	EA	REF	*	*	*	*	*	*			7-2	F14
XDZZ		FUSE, INDICATING ALARM F15 COPPER..... ELEMENT CLASS INSUL SLEEVE 1 TIME IND 3/4 AMP 160 V OR LESS COLOR CODE TAN ALTERNATE ITEM FOR F1 THRU F24 35P (71400) BYM	EA	REF	*	*	*	*	*	*			7-2	F15
XDZZ		FUSE, INDICATING ALARM F16 COPPER..... ELEMENT CLASS INSUL SLEEVE 1 TIME IND 3/4 AMP 160 V OR LESS COLOR CODE TAN. CONTINUED	EA	REF	*	*	*	*	*	*			7-2	F16

SECTION II

TM 11-5920-202-34P

(1) SMR CODE	(2) FEDERAL STOCK NUMBER	(3) DESCRIPTION REFERENCE NUMBER & MFR. CODE USABLE ON CODE	(4) UNIT OF MEAS	(5) QTY INC IN UNIT	(6) 30-DAY GS MAINT ALLOWANCE			(7) 30-DAY GS MAINT ALLOWANCE			(8) 1-YR ALW ER EQUIP CMTG CY	(9) DEPOT MAINT ALW PER 100 EQUIP	(10) ILLUSTRATION	
					(a)	(b)	(c)	(a)	(b)	(c)			(a)	(b)
					1-20	21-50	51-100	1-20	21-50	51-100			FIGURE NO.	ITEM NO.
		CJNTINUED												
XDCZZ		ALTERNATE ITEM FOR F1 THRU F24 35P (71400) BYM FUSE, INDICATING ALARM F17 COPPER..... ELEMENT GLASS INSUL SLEEVE 1 TIME IND 3/4 AMP 160 V OR LESS COLOR CODE TAN ALTERNATE ITEM FOR F1 THRU F24	EA	REF	*	*	*	*	*	*			7-2	F17
XDCZZ		35P (71400) BYM FUSE, INDICATING ALARM F18 COPPER..... ELEMENT GLASS INSUL SLEEVE 1 TIME IND 3/4 AMP 160 V OR LESS COLOR CODE TAN ALTERNATE ITEM FOR F1 THRU F24	EA	REF	*	*	*	*	*	*			7-2	F18
XDCZZ		35P (71400) BYM FUSE, INDICATING ALARM F19 COPPER..... ELEMENT GLASS INSUL SLEEVE 1 TIME IND 3/4 AMP 160 V OR LESS COLOR CODE TAN ALTERNATE ITEM FOR F1 THRU F24	EA	REF	*	*	*	*	*	*			7-2	F19
XDCZZ		35P (71400) BYM FUSE, INDICATING ALARM F20 COPPER..... ELEMENT GLASS INSUL SLEEVE 1 TIME IND 3/4 AMP 160 V OR LESS COLOR CODE TAN ALTERNATE ITEM FOR F1 THRU F24	EA	REF	*	*	*	*	*	*			7-2	F20
XDCZZ		35P (71400) BYM FUSE, INDICATING ALARM F21 COPPER..... ELEMENT GLASS INSUL SLEEVE 1 TIME IND 3/4 AMP 160 V OR LESS COLOR CODE TAN ALTERNATE ITEM FOR F1 THRU F24	EA	REF	*	*	*	*	*	*			7-2	F21
XDCZZ		35P (71400) BYM FUSE, INDICATING ALARM F22 COPPER..... ELEMENT GLASS INSUL SLEEVE 1 TIME IND 3/4 AMP 160 V OR LESS COLOR CODE TAN ALTERNATE ITEM FOR F1 THRU F24	EA	REF	*	*	*	*	*	*			7-2	F22
XDCZZ		35P (71400) BYM FUSE, INDICATING ALARM F23 COPPER..... ELEMENT GLASS INSUL SLEEVE 1 TIME IND 3/4 AMP 160 V OR LESS COLOR CODE TAN ALTERNATE ITEM FOR F1 THRU F24	EA	REF	*	*	*	*	*	*			7-2	F23
XDCZZ		35P (71400) BYM FUSE, INDICATING ALARM F24 COPPER..... ELEMENT GLASS INSUL SLEEVE 1 TIME IND 3/4 AMP 160 V OR LESS COLOR CODE TAN ALTERNATE ITEM FOR F1 THRU F24	EA	REF	*	*	*	*	*	*			7-2	F24
PACZZ	5920-221-4513	35P (71400) BYM FUSE, INDICATING ALARM F1 COPPER..... ELEMENT NO INSUL SLEEVE 1 TIME IND 18/100 AMP 90 V R LESS COLCR CODE YELLOW ALTERNATE ITEM FOR F1 THRU F24	EA	24	*	*	*	*	*	*	5		7-2	F1
PACZZ	5920-221-4513	35R (71400) BYM FUSE, INDICATING ALARM F2 COPPER..... ELEMENT NO INSUL SLEEVE 1 TIME IND 18/100 AMP 90 V OR LESS COLCR CODE YELLOW ALTERNATE ITEM FOR F1 THRU F24	EA	REF	*	*	*	*	*	*	5		7-2	F2

SECTION II

T M 1 1 - 5 9 2 0 - 2 0 2 - 3 4 P

(1) SMR CODE	(2) FEDERAL STOCK NUMBER	(3) DESCRIPTION REFERENCE NUMBER & MFR. CODE    USABLE ON CODE	(4) UNIT OF MEAS	(5) QTY INC IN UNIT	(6) 30-DAY DS MAINT ALLOWANCE			(7) 30-DAY GS MAINT ALLOWANCE			(8) 1 YR ALW PER 100 EQUIP CNTGCT	(9) DEPOT MAINT ALW PER 100 EQUIP	(10) ILLUSTRATION	
					(a) 1-20	(b) 21-50	(c) 51-100	(a) 1-20	(b) 21-50	(c) 51-100			(a) FIGURE NO	(b) ITEM NO.
PACZZ	5920-221-4513	USE, INDICATING ALARM F3 COPPER..... ELEMENT NO INSUL SLEEVE 1 TIME IND 8/100 AMP 90 V OR LESS COLCR CODE ALLOW ALTERNATE ITEM FOR F1 THRU F24 SR (71400) BYM	EA	REF	*	*	*	*	*	*		5	7-2	F3
PACZZ	5920-221-4513	USE, INDICATING ALARM F4 COPPER..... ELEMENT NO INSUL SLEEVE 1 TIME IND 8/100 AMP 90 V OR LESS COLCR CODE ALLOW ALTERNATE ITEM FOR F1 THRU F24 SR (71400) BYM	EA	REF	*	*	*	*	*	*		5	7-2	F4
PACZZ	5920-221-4513	USE, INDICATING ALARM F5 COPPER..... ELEMENT NO INSUL SLEEVE 1 TIME IND 8/100 AMP 90 V OR LESS COLCR CODE ALLOW ALTERNATE ITEM FOR F1 THRU F24 SR (71400) BYM	EA	REF	*	*	*	*	*	*		5	7-2	F5
PACZZ	5920-221-4513	USE, INDICATING ALARM F6 COPPER..... ELEMENT NO INSUL SLEEVE 1 TIME IND 8/100 AMP 90 V OR LESS COLCR CODE ALLOW ALTERNATE ITEM FOR F1 THRU F24 SR (71400) BYM	EA	REF	*	*	*	*	*	*		5	7-2	F6
PACZZ	5920-221-4513	USE, INDICATING ALARM F7 COPPER..... ELEMENT NO INSUL SLEEVE 1 TIME IND 8/100 AMP 90 V OR LESS COLCR CODE ALLOW ALTERNATE ITEM FOR F1 THRU F24 SR (71400) BYM	EA	REF	*	*	*	*	*	*		5	7-2	F7
PACZZ	5920-221-4513	USE, INDICATING ALARM F8 COPPER..... ELEMENT NO INSUL SLEEVE 1 TIME IND 8/100 AMP 90 V OR LESS COLCR CODE ALLOW ALTERNATE ITEM FOR F1 THRU F24 SR (71400) BYM	EA	REF	*	*	*	*	*	*		5	7-2	F8
PACZZ	5920-221-4513	USE, INDICATING ALARM F9 COPPER..... ELEMENT NO INSUL SLEEVE 1 TIME IND 8/100 AMP 90 V OR LESS COLCR CODE ALLOW ALTERNATE ITEM FOR F1 THRU F24 SR (71400) BYM	EA	REF	*	*	*	*	*	*		5	7-2	F9
PACZZ	5920-221-4513	USE, INDICATING ALARM F10 COPPER..... ELEMENT NO INSUL SLEEVE 1 TIME IND 8/100 AMP 90 V OR LESS COLCR CODE ALLOW ALTERNATE ITEM FOR F1 THRU F24 SR (71400) BYM	EA	REF	*	*	*	*	*	*		5	7-2	F10
PACZZ	5920-221-4513	USE, INDICATING ALARM F11 COPPER..... ELEMENT NO INSUL SLEEVE 1 TIME IND 8/100 AMP 90 V OR LESS COLCR CODE ALLOW ALTERNATE ITEM FOR F1 THRU F24 SR (71400) BYM	EA	REF	*	*	*	*	*	*		5	7-2	F11
PACZZ	5920-221-4513	USE, INDICATING ALARM F12 COPPER..... ELEMENT NO INSUL SLEEVE 1 TIME IND 8/100 AMP 90 V OR LESS COLCR CODE ALLOW ALTERNATE ITEM FOR F1 THRU F24 SR (71400) BYM	EA	REF	*	*	*	*	*	*		5	7-2	F12
PACZZ	5920-221-4513	USE, INDICATING ALARM F13 COPPER..... ELEMENT NO INSUL SLEEVE 1 TIME IND CONTINUED	EA	REF	*	*	*	*	*	*		5	7-2	F13

(1) SMR CODE	(2) FEDERAL STOCK NUMBER	(3) DESCRIPTION REFERENCE NUMBER & MFR. CODE    USABLE ON CODE	(4) UNIT OF MEAS	(5) QTY INC IN UNIT	(6) 30-DAY DS MAINT ALLOWANCE			(7) 30-DAY GS MAINT ALLOWANCE			(8) 1-YR ALW PER 100 EQUIP CNTGCTY	(9) DEPOT MAINT ALW PER 100 EQUIP	(10) ILLUSTRATION	
					(a)	(b)	(c)	(a)	(b)	(c)			(a)	(b)
					1-20	21-50	51-100	1-20	21-50	51-100			FIGURE NO	ITEM NO
		CONTINUED												
PACZZ	5920-221-4513	18/100 AMP 90 V OR LESS COLCR CODE YELLOW ALTERNATE ITEM FOR F1 THRU F24 35R (71400) BYM FUSE, INDICATING ALARM F14 COPPER..... ELEMENT NO INSUL SLEEVE 1 TIME IND	EA	REF	*	*	*	*	*	*	5	7-2	F14	
PACZZ	5920-221-4513	18/100 AMP 90 V OR LESS COLCR CODE YELLOW ALTERNATE ITEM FOR F1 THRU F24 35R (71400) BYM FUSE, INDICATING ALARM F15 COPPER..... ELEMENT NO INSUL SLEEVE 1 TIME IND	EA	REF	*	*	*	*	*	*	5	7-2	F15	
PACZZ	5920-221-4513	18/100 AMP 90 V OR LESS COLCR CODE YELLOW ALTERNATE ITEM FOR F1 THRU F24 35R (71400) BYM FUSE, INDICATING ALARM F16 COPPER..... ELEMENT NO INSUL SLEEVE 1 TIME IND	EA	REF	*	*	*	*	*	*	5	7-2	F16	
PACZZ	5920-221-4513	18/100 AMP 90 V OR LESS COLCR CODE YELLOW ALTERNATE ITEM FOR F1 THRU F24 35R (71400) BYM FUSE, INDICATING ALARM F17 COPPER..... ELEMENT NO INSUL SLEEVE 1 TIME IND	EA	REF	*	*	*	*	*	*	5	7-2	F17	
PACZZ	5920-221-4513	18/100 AMP 90 V OR LESS COLCR CODE YELLOW ALTERNATE ITEM FOR F1 THRU F24 35R (71400) BYM FUSE, INDICATING ALARM F18 COPPER..... ELEMENT NO INSUL SLEEVE 1 TIME IND	EA	REF	*	*	*	*	*	*	5	7-2	F18	
PACZZ	5920-221-4513	18/100 AMP 90 V OR LESS COLCR CODE YELLOW ALTERNATE ITEM FOR F1 THRU F24 35R (71400) BYM FUSE, INDICATING ALARM F19 COPPER..... ELEMENT NO INSUL SLEEVE 1 TIME IND	EA	REF	*	*	*	*	*	*	5	7-2	F19	
PACZZ	5920-221-4513	18/100 AMP 90 V OR LESS COLCR CODE YELLOW ALTERNATE ITEM FOR F1 THRU F24 35R (71400) BYM FUSE, INDICATING ALARM F20 COPPER..... ELEMENT NO INSUL SLEEVE 1 TIME IND	EA	REF	*	*	*	*	*	*	5	7-2	F20	
PACZZ	5920-221-4513	18/100 AMP 90 V OR LESS COLCR CODE YELLOW ALTERNATE ITEM FOR F1 THRU F24 35R (71400) BYM FUSE, INDICATING ALARM F21 COPPER..... ELEMENT NO INSUL SLEEVE 1 TIME IND	EA	REF	*	*	*	*	*	*	5	7-2	F21	
PACZZ	5920-221-4513	18/100 AMP 90 V OR LESS COLCR CODE YELLOW ALTERNATE ITEM FOR F1 THRU F24 35R (71400) BYM FUSE, INDICATING ALARM F22 COPPER..... ELEMENT NO INSUL SLEEVE 1 TIME IND	EA	REF	*	*	*	*	*	*	5	7-2	F22	
PACZZ	5920-221-4513	18/100 AMP 90 V OR LESS COLCR CODE YELLOW ALTERNATE ITEM FOR F1 THRU F24 35R (71400) BYM FUSE, INDICATING ALARM F23 COPPER..... ELEMENT NO INSUL SLEEVE 1 TIME IND	EA	REF	*	*	*	*	*	*	5	7-2	F23	
		CONTINUED												

SECTION II  
SECTION 11

TM 11-5920-202-34P  
TM 11-5920-202-34P

(1) SMR CODE	(2) FEDERAL STOCK NUMBER	(3) DESCRIPTION REFERENCE NUMBER & MFR. CODE USABLE ON CODE	(4) UNIT OF MEAS	(5) QTY INC IN UNIT	(6) 30-DAY DS MAINT ALLOWANCE			(7) 30-DAY GS MAINT ALLOWANCE			(8) 1-YR ALW PER 100 EQUIP CATEGY	(9) DEPOT MAINT ALW PER 100 EQUIP	(10) ILLUSTRATION	
					(a)	(b)	(c)	(a)	(b)	(c)			(a)	(b)
					1-20	21-50	51-100	1-20	21-50	51-100			FIGURE NO.	ITEM NO.
		CONTINUED												
PACZZ	5920-221-4513	YELLOW ALTERNATE ITEM FOR F1 THRU F24 35S (71400) BYM FUSE, INDICATING ALARM F24 COPPER..... ELEMENT GLASS INSUL SLEEVE 1 TIME IND IND 1/4 AMP 90 V OR LESS CCLOR CODED PINK ALTERNATE ITEM FOR F1 THRU F24	EA	REF	*	*	*	*	*	*	5	7-2	F24	
PACZZ	5920-211-4512	YELLOW ALTERNATE ITEM FOR F1 THRU F24 35S (71400) BYM FUSE, INDICATING ALARM F1 COPPER..... ELEMENT GLASS INSUL SLEEVE 1 TIME IND 1/4 AMP 160 V OR LESS CCLOR CODED PINK ALTERNATE ITEM FOR F1 THRU F24	EA	24	*	*	*	*	*	*	5	7-2	F1	
PACZZ	5920-211-4512	YELLOW ALTERNATE ITEM FOR F1 THRU F24 35S (71400) BYM FUSE, INDICATING ALARM F2 COPPER..... ELEMENT GLASS INSUL SLEEVE 1 TIME IND 1/4 AMP 160 V OR LESS CCLOR CODED PINK ALTERNATE ITEM FOR F1 THRU F24	EA	REF	*	*	*	*	*	*	5	7-2	F2	
PACZZ	5920-211-4512	YELLOW ALTERNATE ITEM FOR F1 THRU F24 35S (71400) BYM FUSE, INDICATING ALARM F3 COPPER..... ELEMENT GLASS INSUL SLEEVE 1 TIME IND 1/4 AMP 160 V OR LESS CCLOR CODED PINK ALTERNATE ITEM FOR F1 THRU F24	EA	REF	*	*	*	*	*	*	5	7-2	F3	
PACZZ	5920-211-4512	YELLOW ALTERNATE ITEM FOR F1 THRU F24 35S (71400) BYM FUSE, INDICATING ALARM F4 COPPER..... ELEMENT GLASS INSUL SLEEVE 1 TIME IND 1/4 AMP 160 V OR LESS CCLOR CODED PINK ALTERNATE ITEM FOR F1 THRU F24	EA	REF	*	*	*	*	*	*	5	7-2	F4	
PACZZ	5920-211-4512	YELLOW ALTERNATE ITEM FOR F1 THRU F24 35S (71400) BYM FUSE, INDICATING ALARM F5 COPPER..... ELEMENT GLASS INSUL SLEEVE 1 TIME IND 1/4 AMP 160 V OR LESS CCLOR CODED PINK ALTERNATE ITEM FOR F1 THRU F24	EA	REF	*	*	*	*	*	*	5	7-2	F5	
PACZZ	5920-211-4512	YELLOW ALTERNATE ITEM FOR F1 THRU F24 35S (71400) BYM FUSE, INDICATING ALARM F6 COPPER..... ELEMENT GLASS INSUL SLEEVE 1 TIME IND 1/4 AMP 160 V OR LESS CCLOR CODED PINK ALTERNATE ITEM FOR F1 THRU F24	EA	REF	*	*	*	*	*	*	5	7-2	F6	
PACZZ	5920-211-4512	YELLOW ALTERNATE ITEM FOR F1 THRU F24 35S (71400) BYM FUSE, INDICATING ALARM F7 COPPER..... ELEMENT GLASS INSUL SLEEVE 1 TIME IND 1/4 AMP 160 V OR LESS CCLOR CODED PINK ALTERNATE ITEM FOR F1 THRU F24	EA	REF	*	*	*	*	*	*	5	7-2	F7	
PACZZ	5920-211-4512	YELLOW ALTERNATE ITEM FOR F1 THRU F24 35S (71400) BYM FUSE, INDICATING ALARM F8 COPPER..... ELEMENT GLASS INSUL SLEEVE 1 TIME IND 1/4 AMP 160 V OR LESS CCLOR CODED PINK ALTERNATE ITEM FOR F1 THRU F24	EA	REF	*	*	*	*	*	*	5	7-2	F8	
PACZZ	5920-211-4512	YELLOW ALTERNATE ITEM FOR F1 THRU F24 35S (71400) BYM FUSE, INDICATING ALARM F9 COPPER..... ELEMENT GLASS INSUL SLEEVE 1 TIME IND 1/4 AMP 160 V OR LESS CCLOR CODED PINK ALTERNATE ITEM FOR F1 THRU F24	EA	REF	*	*	*	*	*	*	5	7-2	F9	



SECTION II

TM 11-5920-202-34P

(1) SMR CODE	(2) FEDERAL STOCK NUMBER	(3) DESCRIPTION REFERENCE NUMBER & MFR. CODE    USABLE ON CODE		(4) UNIT OF MEAS	(5) QTY INC IN UNIT	(6) 30-DAY DS MAINT ALLOWANCE			(7) 30-DAY CS MAINT ALLOWANCE			(8) 1-YR ALW PER 100 EQUIP CNTGCT	(9) DEPOT MAINT ALW PER 100 EQUIP	(10) ILLUSTRATION	
						(a)	(b)	(c)	(a)	(b)	(c)			(a)	(b)
						1-20	21-50	51-100	1-20	21-50	51-100			FIGURE NO.	ITEM NO.
PACZZ	5920-211-4512	FUSE, INDICATING ALARM F10 ELEMENT GLASS INSUL SLEEVE IND 1/4 AMP 160 V OR LESS PINK ALTERNATE ITEM FOR F1 355 (71400)	COPPER..... 1 TIME COLOR CODED THRU F24 BYM	EA	REF	*	*	*	*	*	*		5	7-2	F10
PACZZ	5920-211-4512	FUSE, INDICATING ALARM F11 ELEMENT GLASS INSUL SLEEVE IND 1/4 AMP 160 V OR LESS PINK ALTERNATE ITEM FOR F1 355 (71400)	COPPER..... 1 TIME COLOR CODED THRU F24 BYM	EA	REF	*	*	*	*	*	*		5	7-2	F11
PACZZ	5920-211-4512	FUSE, INDICATING ALARM F12 ELEMENT GLASS INSUL SLEEVE IND 1/4 AMP 160 V OR LESS PINK ALTERNATE ITEM FOR F1 355 (71400)	COPPER..... 1 TIME CCLOR CODED THRU F24 BYM	EA	REF	*	*	*	*	*	*		5	7-2	F12
PACZZ	5920-211-4512	FUSE, INDICATING ALARM F13 ELEMENT GLASS INSUL SLEEVE IND 1/4 AMP 160 V OR LESS PINK ALTERNATE ITEM FOR F1 355 (71400)	COPPER..... 1 TIME CGLOR CODED THRU F24 BYM	EA	REF	*	*	*	*	*	*		5	7-2	F13
PACZZ	5920-211-4512	FUSE, INDICATING ALARM F14 ELEMENT GLASS INSUL SLEEVE IND 1/4 AMP 160 V OR LESS PINK ALTERNATE ITEM FOR F1 355 (71400)	COPPER..... 1 TIME CCLOR CODED THRU F24 BYM	EA	REF	*	*	*	*	*	*		5	7-2	F14
PACZZ	5920-211-4512	FUSE, INDICATING ALARM F15 ELEMENT GLASS INSUL SLEEVE IND 1/4 AMP 160 V OR LESS PINK ALTERNATE ITEM FOR F1 355 (71400)	COPPER..... 1 TIME CCLOR CODED THRU F24 BYM	EA	REF	*	*	*	*	*	*		5	7-2	F15
PACZZ	5920-211-4512	FUSE, INDICATING ALARM F16 ELEMENT GLASS INSUL SLEEVE IND 1/4 AMP 160 V OR LESS PINK ALTERNATE ITEM FOR F1 355 (71400)	COPPER..... 1 TIME CCLOR CODED THRU F24 BYM	EA	REF	*	*	*	*	*	*		5	7-2	F16
PACZZ	5920-211-4512	FUSE, INDICATING ALARM F17 ELEMENT GLASS INSUL SLEEVE IND 1/4 AMP 160 V OR LESS PINK ALTERNATE ITEM FOR F1 355 (71400)	COPPER..... 1 TIME CCLOR CODED THRU F24 BYM	EA	REF	*	*	*	*	*	*		5	7-2	F17
PACZZ	5920-211-4512	FUSE, INDICATING ALARM F18 ELEMENT GLASS INSUL SLEEVE IND 1/4 AMP 160 V OR LESS PINK ALTERNATE ITEM FOR F1 355 (71400)	COPPER..... 1 TIME CCLOR CODED THRU F24 BYM	EA	REF	*	*	*	*	*	*		5	7-2	F18
PACZZ	5920-211-4512	FUSE, INDICATING ALARM F19 ELEMENT GLASS INSUL SLEEVE IND 1/4 AMP 160 V OR LESS PINK ALTERNATE ITEM FOR F1 355 (71400)	COPPER..... 1 TIME CCLOR CODED THRU F24 BYM	EA	REF	*	*	*	*	*	*		5	7-2	F19
PACZZ	5920-211-4512	FUSE, INDICATING ALARM F20 ELEMENT GLASS INSUL SLEEVE CONTINUED	COPPER..... 1 TIME	EA	REF	*	*	*	*	*	*		5	7-2	F20

(1) SMR CODE	(2) FEDERAL STOCK NUMBER	(3) DESCRIPTION REFERENCE NUMBER & MFR. CODE USABLE ON CODE	(4) UNIT OF MEAS	(5) QTY INC IN UNIT	(6) 30-DAY D5 MAINT ALLOWANCE			(7) 30-DAY G5 MAINT ALLOWANCE			(8) 1-YR ALW PER 100 EQUIP CNTGCT	(9) DEPOT MAINT ALW PER 100 EQUIP	(10) ILLUSTRATION	
					(a)	(b)	(c)	(a)	(b)	(c)			(a)	(b)
					1-20	21-50	51-100	1-20	21-50	51-100			FIGURE NO.	ITEM NO.
PACZZ	5920-211-4512	CONTINUED IND 1/4 AMP 160 V OR LESS COLOR CODED PINK ALTERNATE ITEM FOR F1 THRU F24 355 (71400) BYM	EA	REF	*	*	*	*	*	*	5	7-2	F21	
PACZZ	5920-211-4512	FUSE, INDICATING ALARM F21 COPPER..... ELEMENT GLASS INSUL SLEEVE 1 TIME IND 1/4 AMP 160 V OR LESS COLOR CODED PINK ALTERNATE ITEM FOR F1 THRU F24 355 (71400) BYM	EA	REF	*	*	*	*	*	*	5	7-2	F22	
PACZZ	5920-211-4512	FUSE, INDICATING ALARM F22 COPPER..... ELEMENT GLASS INSUL SLEEVE 1 TIME IND 1/4 AMP 160 V OR LESS COLOR CODED PINK ALTERNATE ITEM FOR F1 THRU F24 355 (71400) BYM	EA	REF	*	*	*	*	*	*	5	7-2	F23	
PACZZ	5920-211-4512	FUSE, INDICATING ALARM F23 COPPER..... ELEMENT GLASS INSUL SLEEVE 1 TIME IND 1/4 AMP 160 V OR LESS COLOR CODED PINK ALTERNATE ITEM FOR F1 THRU F24 355 (71400) BYM	EA	REF	*	*	*	*	*	*	5	7-2	F24	
PAQZZ	6240-155-7837	LAMP, INCANDESCENT LML 24 V SLIDE BASE. TYPE 24E (24446) BYM	EA	1	*	*	*	*	*	*	20	7-2	LML	
XDOZZ		LENS, INDICATING LIGHT NO-REF-DESIG RED 5/8 IN LG X 5/8 IN DIA 81-621 (72619) BYM	EA	1	*	*	*	*	*	*				
PAFZZ	6210-984-6167	LIGHT, INDICATOR NO-REF-DESIG W/O LENS SLIDE BASE TYPE 2 IN LG X 13/16 IN DIA 52420-9 (72619) BYM	EA	1	*	*	*	*	*	*	5			
XDFZZ		RELAY, ARMATURE K1 8,000 OHM RESISTANCE. 110 VDC OPER VOLTAGE GHA1C110VDC (19412) BYM	EA	1	*	*	*	*	*	*		7-2	K1	
PAFZZ	5905-549-3506	RESISTOR, FIXED, WIRE WOUND R1 2,500 OHM PORMSPCT 10 W RW29V252 (81349) BYM	EA	1	*	*	*	*	*	*	3	7-2	R1	
PAFZZ	5905-549-5335	RESISTOR, FIXED, WIRE WOUND R2 1,000 OHM PORMSPCT 10 W RW29V102 (81349) BYM	EA	1	*	*	*	*	*	*	3	7-2	R2	
XDFZZ		TERMINAL BOARD TB2 20 DOUBLE SCREW..... BARRIER TYPE 8-1/4 IN LG X 7/8 IN W X 3/8 IN H 600-20C (75382) BYM	EA	1	*	*	*	*	*	*			TB2	
XDFZZ		TERMINAL BOARD TB3 10 DOUBLE SCREW..... BARRIER TYPE 4-3/8 IN LG X 7/8 IN W X 3/8 IN H	EA	1	*	*	*	*	*	*			TB3	



SECTION IV

TM 11-5920-202-34P

STOCK NUMBER	FIGURE NO.	ITEM NO.	STOCK NUMBER	FIGURE NO.	ITEM NO.
5920-280-8582	7-2	F16			
5920-280-8582	7-2	F17			
5920-280-8582	7-2	F18			
5920-280-8582	7-2	F19			
5920-280-8582	7-2	F20			
5920-280-8582	7-2	F21	5920-850-1773	7-2	F10
5920-280-8582	7-2	F22	5920-850-1773	7-2	F11
5920-280-8582	7-2	F23	5920-850-1773	7-2	F12
5920-280-8582	7-2	F24	5920-850-1773	7-2	F13
5920-280-8582	7-2	F1	5920-850-1773	7-2	F14
5920-280-8582	7-2	F2	5920-850-1773	7-2	F15
5920-280-8582	7-2	F3	5920-850-1773	7-2	F16
5920-280-8582	7-2	F4	5920-850-1773	7-2	F17
5920-280-8582	7-2	F5	5920-850-1773	7-2	F18
5920-280-8582	7-2	F6	5920-850-1773	7-2	F19
5920-280-8582	7-2	F7	5920-850-1773	7-2	F20
5920-280-8582	7-2	F8	5920-850-1773	7-2	F21
5920-280-8582	7-2	F9	5920-850-1773	7-2	F22
			5920-850-1773	7-2	F23
			5920-850-1773	7-2	F24
			5920-850-1773	7-2	F1
			5920-850-1773	7-2	F2
			5920-850-1773	7-2	F3
			5920-850-1773	7-2	F4
			5920-850-1773	7-2	F5
			5920-850-1773	7-2	F6
			5920-850-1773	7-2	F7
			5920-850-1773	7-2	F8
			5920-850-1773	7-2	F9
			6210-984-6167		
			6240-155-7837	7-2	LMI

REFERENCE NO.	MFR CODE	FIG. NO.	ITEM NO.	REFERENCE No.	MFR CODE	FIG. NO.	ITEM NO.
GHA1C11VVJC	19412	7-2	K1	35G	71400	7-2	F7
GHA1C24VDC	19412	7-2	K1	35G	71400	7-2	F8
RN29V1U2	81349	7-2	R2	35G	71400	7-2	F9
Md29V252	81349	7-2	R1	35G	71400	7-2	F10
144M5115	83827	7-2	R2	35G	71400	7-2	F11
144M0015	83827	7-2	R1	35G	71400	7-2	F12
24E	24446	7-2	LMI	35G	71400	7-2	F13
35B	71400	7-2	F1	35G	71400	7-2	F14
35B	71400	7-2	F2	35G	71400	7-2	F15
35B	71400	7-2	F3	35G	71400	7-2	F16
35B	71400	7-2	F4	35G	71400	7-2	F17
35B	71400	7-2	F5	35G	71400	7-2	F18
35B	71400	7-2	F6	35G	71400	7-2	F19
35B	71400	7-2	F7	35G	71400	7-2	F20
35B	71400	7-2	F8	35G	71400	7-2	F21
35B	71400	7-2	F9	35G	71400	7-2	F22
35B	71400	7-2	F10	35G	71400	7-2	F23
35B	71400	7-2	F11	35G	71400	7-2	F24
35B	71400	7-2	F12	35H	71400	7-2	F1
35B	71400	7-2	F13	35H	71400	7-2	F2
35B	71400	7-2	F14	35H	71400	7-2	F3
35B	71400	7-2	F15	35H	71400	7-2	F4
35B	71400	7-2	F16	35H	71400	7-2	F5
35B	71400	7-2	F17	35H	71400	7-2	F6
35B	71400	7-2	F18	35H	71400	7-2	F7
35B	71400	7-2	F19	35H	71400	7-2	F8
35B	71400	7-2	F20	35H	71400	7-2	F9
35B	71400	7-2	F21	35H	71400	7-2	F10
35B	71400	7-2	F22	35H	71400	7-2	F11
35B	71400	7-2	F23	35H	71400	7-2	F12
35B	71400	7-2	F24	35H	71400	7-2	F13
35B	71400	7-2	F1	35H	71400	7-2	F14
35B	71400	7-2	F2	35H	71400	7-2	F15
35B	71400	7-2	F3	35H	71400	7-2	F16
35B	71400	7-2	F4	35H	71400	7-2	F17
35B	71400	7-2	F5	35H	71400	7-2	F18
35B	71400	7-2	F6	35H	71400	7-2	F19

## SECTION IV

TM 11-5920-202-34P

REFERENCE NO.	MFR CODE	FIG. NO.	ITEM NO.	REFERENCE NO.	MFR CODE	FIG. NO.	ITEM NO.
35M	71400	7-2	F21	35P	71400	7-2	F3
35M	71400	7-2	F22	35P	71400	7-2	F4
35M	71400	7-2	F23	35P	71400	7-2	F5
35M	71400	7-2	F24	35P	71400	7-2	F6
35J	71400	7-2	F1	35P	71400	7-2	F7
35J	71400	7-2	F2	35P	71400	7-2	F8
35J	71400	7-2	F3	35P	71400	7-2	F9
35J	71400	7-2	F4	35P	71400	7-2	F10
35J	71400	7-2	F5	35P	71400	7-2	F11
35J	71400	7-2	F6	35P	71400	7-2	F12
35J	71400	7-2	F7	35P	71400	7-2	F13
35J	71400	7-2	F8	35P	71400	7-2	F14
35J	71400	7-2	F9	35P	71400	7-2	F15
35J	71400	7-2	F10	35P	71400	7-2	F16
35J	71400	7-2	F11	35P	71400	7-2	F17
35J	71400	7-2	F12	35P	71400	7-2	F18
35J	71400	7-2	F13	35P	71400	7-2	F19
35J	71400	7-2	F14	35P	71400	7-2	F20
35J	71400	7-2	F15	35P	71400	7-2	F21
35J	71400	7-2	F16	35P	71400	7-2	F22
35J	71400	7-2	F17	35P	71400	7-2	F23
35J	71400	7-2	F18	35P	71400	7-2	F24
35J	71400	7-2	F19	35R	71400	7-2	F1
35J	71400	7-2	F20	35R	71400	7-2	F2
35J	71400	7-2	F21	35R	71400	7-2	F3
35J	71400	7-2	F22	35R	71400	7-2	F4
35J	71400	7-2	F23	35R	71400	7-2	F5
35J	71400	7-2	F24	35R	71400	7-2	F6
35K	71400	7-2	F1	35R	71400	7-2	F7
35K	71400	7-2	F2	35R	71400	7-2	F8
35K	71400	7-2	F3	35R	71400	7-2	F9
35K	71400	7-2	F4	35R	71400	7-2	F10
35K	71400	7-2	F5	35R	71400	7-2	F11
35K	71400	7-2	F6	35R	71400	7-2	F12
35K	71400	7-2	F7	35R	71400	7-2	F13
35K	71400	7-2	F8	35R	71400	7-2	F14
35K	71400	7-2	F9	35R	71400	7-2	F15
35K	71400	7-2	F10	35R	71400	7-2	F16
35K	71400	7-2	F11	35R	71400	7-2	F17
35K	71400	7-2	F12	35R	71400	7-2	F18
35K	71400	7-2	F13	35R	71400	7-2	F19
35K	71400	7-2	F14	35R	71400	7-2	F20
35K	71400	7-2	F15	35R	71400	7-2	F21
35K	71400	7-2	F16	35R	71400	7-2	F22
35K	71400	7-2	F17	35R	71400	7-2	F23
35K	71400	7-2	F18	35R	71400	7-2	F24
35K	71400	7-2	F19	35S	71400	7-2	F1
35K	71400	7-2	F20	35S	71400	7-2	F2
35K	71400	7-2	F21	35S	71400	7-2	F3
35K	71400	7-2	F22	35S	71400	7-2	F4
35K	71400	7-2	F23	35S	71400	7-2	F5
35K	71400	7-2	F24	35S	71400	7-2	F6
35L	71400	7-2	F1	35S	71400	7-2	F7
35L	71400	7-2	F2	35S	71400	7-2	F8
35L	71400	7-2	F3	35S	71400	7-2	F9
35L	71400	7-2	F4	35S	71400	7-2	F10
35L	71400	7-2	F5	35S	71400	7-2	F11
35L	71400	7-2	F6	35S	71400	7-2	F12
35L	71400	7-2	F7	35S	71400	7-2	F13
35L	71400	7-2	F8	35S	71400	7-2	F14
35L	71400	7-2	F9	35S	71400	7-2	F15
35L	71400	7-2	F10	35S	71400	7-2	F16
35L	71400	7-2	F11	35S	71400	7-2	F17
35L	71400	7-2	F12	35S	71400	7-2	F18
35L	71400	7-2	F13	35S	71400	7-2	F19
35L	71400	7-2	F14	35S	71400	7-2	F20
35L	71400	7-2	F15	35S	71400	7-2	F21
35L	71400	7-2	F16	35S	71400	7-2	F22
35L	71400	7-2	F17	35S	71400	7-2	F23
35L	71400	7-2	F18	35S	71400	7-2	F24
35L	71400	7-2	F19	35S	71400	7-2	F25
35L	71400	7-2	F20	2428-9	72619		
35L	71400	7-2	F21	600-10C	75382		183
35L	71400	7-2	F22	600-20C	75382		182
35L	71400	7-2	F23	81-621	72619		
35L	71400	7-2	F24				

By Order of the Secretary of the Army:

**FRED C. WEYAND**  
General, *United States Army*  
Chief of Staff

**Official:**

**VERNE L. BOWERS**  
Major General, *United States Army*  
The Adjutant General

**Distribution:**

**Active Army:**

<b>USASA(2)</b>	USAADS (2)
<b>CNGB (1)</b>	USAFAS (2)
<b>Dir of Trans (1)</b>	USAARMS (2)
<b>COE (1)</b>	USAIS (2)
<b>TSG(1)</b>	USAES (2)
<b>USAARENBD (1)</b>	AD (1) except
<b>AMC (1)</b>	SAAD (30)
<b>MICOM (2)</b>	<b>LBAD (14)</b>
<b>TECOM (2)</b>	<b>TOAD (14)</b>
<b>HISA (Ft Monmouth) (18)</b>	<b>ATAD (10)</b>
<i>USACC (4)</i>	<b>USA Dep (2)</b>
TRADOC(2)	<b>Sig Sec USA Dep (2)</b>
ARADCOM (2)	<b>Sig Dep (3)</b>
ARADCOM Rgn (2)	<b>ATS (1)</b>
<b>OS Maj Comd (4)</b>	<b>MAAG (1)</b>
<b>LOGCOMD (3)</b>	<b>USARMIS (1)</b>
<b>MDW (1)</b>	<b>USAERDAA (1)</b>
<b>Armies (2)</b>	<b>USAERDAW (1)</b>
<b>Corps (2)</b>	<b>Sig FLDMS (1)</b>
<b>Ft Gordon (10)</b>	<b>Ft Richardson (ECOM Ofc) (2)</b>
<b>Ft Huachuca (10)</b>	<b>Units org under fol TOE (1 ea):</b>
<b>Ft Carson(5)</b>	11-16
<b>WSMR (1)</b>	11-97
<b>Svc Colleges (1)</b>	11-98
<b>USASESS (5)</b>	'11-117
<b>USAINTCs (3)</b>	11-500 (AA-AC)

**ARNG & USAR: None**

**For explanation of abbreviations used, see AR 310-50.**

★U.S. GOVERNMENT PRINTING OFFICE: 1974-065136/346

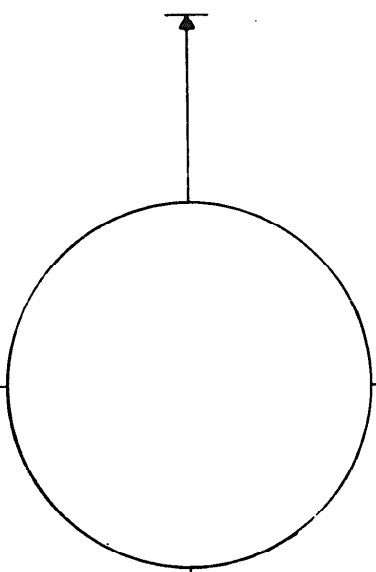
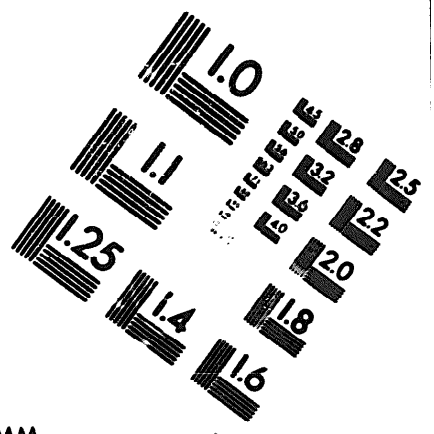
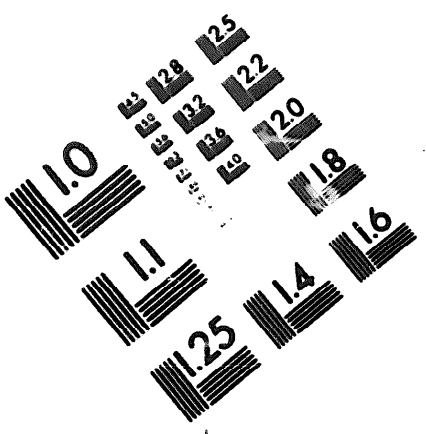
**END**

**12-08-82**

**DATE**



DEPARTMENT OF THE ARMY  
MICROFORM  
TEST TARGET



150 MM

1.0 mm (e= 0.1 mm)

ABCDEFGHIJKLMN OPQRSTUVWXYZ 1234567890  
abcdefghijklmnopqrstuvwxyz \$%&' /%# 1/2 1/4 3/4 — = + x & @ \*

1.5 mm (e= 1.09 mm)

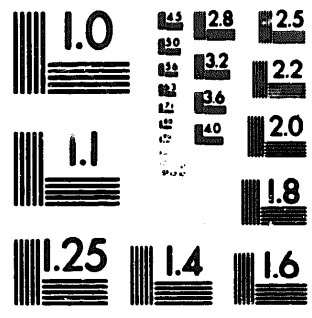
ABCDEFGHIJKLMN OPQRSTUVWXYZ 1234567890  
abcdefghijklmnopqrstuvwxyz \$%&' /%# 1/2 1/4 3/4 — = + x & @ \*

2.0 mm (e= 1.37 mm)

ABCDEFGHIJKLMN OPQRSTUVWXYZ  
abcdefghijklmnopqrstuvwxyz  
1234567890 \$%&' /%# 1/2 1/4 3/4 — = + x & @ \*

2.5 mm (e= 1.77 mm)

ABCDEFGHIJKLMN OPQRSTUVWXYZ  
abcdefghijklmnopqrstuvwxyz  
1234567890 \$%&' /%# 1/2 1/4 3/4 — = + x & @ \*



1.0 mm (e= 0.1 mm)

ABCDEFGHIJKLMN OPQRSTUVWXYZ 1234567890  
abcdefghijklmnopqrstuvwxyz \$%&' /%# 1/2 1/4 3/4 — = + x & @ \*

1.5 mm (e= 1.09 mm)

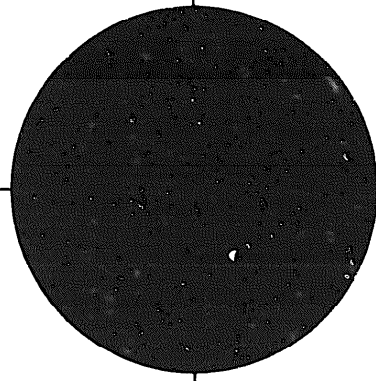
ABCDEFGHIJKLMN OPQRSTUVWXYZ 1234567890  
abcdefghijklmnopqrstuvwxyz \$%&' /%# 1/2 1/4 3/4 — = + x & @ \*

2.0 mm (e= 1.37 mm)

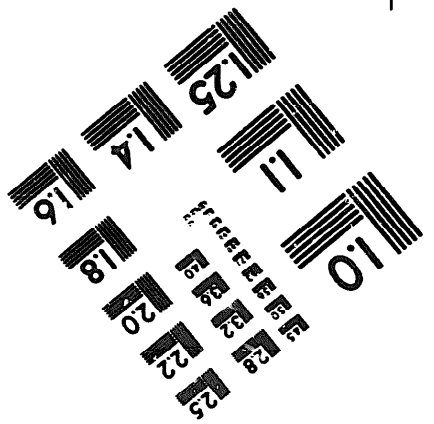
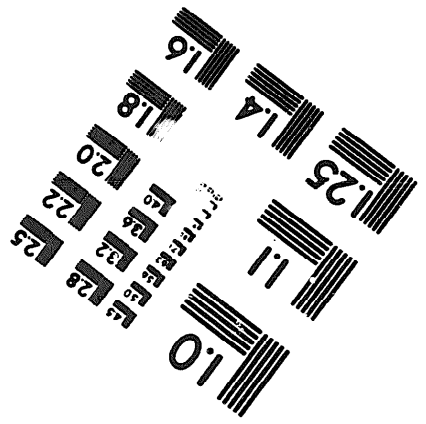
ABCDEFGHIJKLMN OPQRSTUVWXYZ  
abcdefghijklmnopqrstuvwxyz  
1234567890 \$%&' /%# 1/2 1/4 3/4 — = + x & @ \*

2.5 mm (e= 1.77 mm)

ABCDEFGHIJKLMN OPQRSTUVWXYZ  
abcdefghijklmnopqrstuvwxyz  
1234567890 \$%&' /%# 1/2 1/4 3/4 — = + x & @ \*



200 MM



250 MM